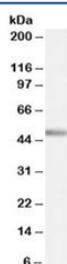


## PTF1A Antibody (R36349)

| Catalog No.  | Formulation   | Size   |
|--------------|---|--------|
| R36349-100UG | 0.5 mg/ml in 1X TBS, pH7.3, with 0.5% BSA (US sourced) and 0.02% sodium azide | 100 ug |

[Bulk quote request](#)

|                      |  |
|----------------------|--|
| Availability         | 1-3 business days  |
| Species Reactivity   | Human  |
| Predicted Reactivity | Dog, Mouse, Rat, Zebrafish                                   |
| Format               | Antigen affinity purified                                    |
| Clonality            | Polyclonal (goat origin)                                     |
| Isotype              | Goat Ig  |
| Purity               | Antigen affinity   |
| Gene ID              | 256297   |
| Applications         | Western Blot : 0.5-1.5ug/ml<br>ELISA (peptide) LOD : 1:32000 |
| Limitations          | This PTF1A antibody is available for research use only.      |



Western blot testing of human cerebellum lysate with PTF1A antibody at 0.5ug/ml.  
Predicted molecular weight: ~35kDa, routinely observed at ~48kDa. (Ref 1)

## Description

Additional name(s) for this target protein: Pancreas specific transcription factor 1a; PTF1-p48; bHLH transcription factor p48

## Application Notes

Optimal dilution of the PTF1A antibody should be determined by the researcher.

## Immunogen

Amino acids WTDEKQLKEQN were used as the immunogen for this PTF1A antibody.

## Storage

Aliquot and store the PTF1A antibody at -20oC.

## References (1)