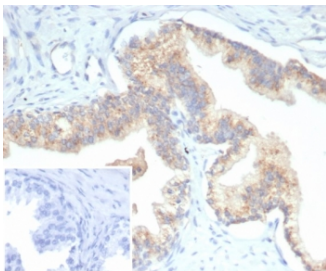


PTEN Antibody [clone PTEN/7345] (V4105)

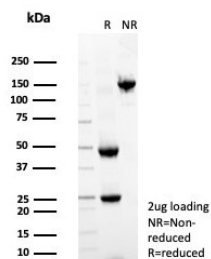
Catalog No.	Formulation	Size
V4105-100UG	0.2 mg/ml in 1X PBS with 0.1 mg/ml BSA (US sourced), 0.05% sodium azide	100 ug
V4105-20UG	0.2 mg/ml in 1X PBS with 0.1 mg/ml BSA (US sourced), 0.05% sodium azide	20 ug
V4105SAF-100UG	1 mg/ml in 1X PBS; BSA free, sodium azide free	100 ug

[Bulk quote request](#)

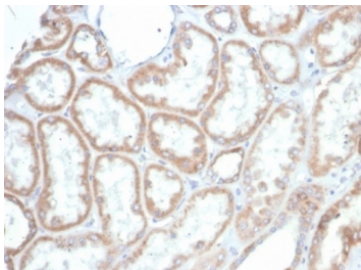
Availability	1-3 business days
Species Reactivity	Human
Format	Purified
Host	Mouse
Clonality	Monoclonal (mouse origin)
Isotype	Mouse IgG, kappa
Clone Name	PTEN/7345
Purity	Protein A/G affinity
UniProt	P60484
Localization	Cytoplasm, Nucleus
Applications	ELISA (Order BSA-free Format For Coating) : Immunohistochemistry (FFPE) : 1-2ug/ml for 30 minutes at RT
Limitations	This PTEN antibody is available for research use only.



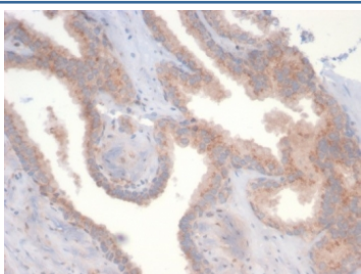
IHC staining of FFPE human prostate carcinoma tissue with PTEN antibody (clone PTEN/7345) at 2ug/ml. Inset: PBS used in place of primary Ab (secondary Ab negative control). HIER: boil tissue sections in pH 9 10mM Tris with 1mM EDTA for 20 min and allow to cool before testing.



SDS-PAGE analysis of purified, BSA-free PTEN antibody (clone PTEN/7345) as confirmation of integrity and purity.



IHC staining of FFPE human kidney tissue with PTEN antibody (clone PTEN/7345) at 2ug/ml. HIER: boil tissue sections in pH 9 10mM Tris with 1mM EDTA for 20 min and allow to cool before testing.



IHC staining of FFPE human prostate tissue with PTEN antibody (clone PTEN/7345) at 2ug/ml. HIER: boil tissue sections in pH 9 10mM Tris with 1mM EDTA for 20 min and allow to cool before testing.

Description

PTEN (phosphatidylinositol-3,4,5-trisphosphate 3-phosphatase) contains a tensin like domain as well as a catalytic domain similar to that of the dual specificity protein tyrosine phosphatases. It was identified as a tumor suppressor that is mutated in a large number of cancers, including sporadic brain, breast, kidney, and prostate cancers.

Application Notes

Optimal dilution of the PTEN antibody should be determined by the researcher.

Immunogen

Recombinant full-length human PTEN protein was used as the immunogen for the PTEN antibody.

Storage

Aliquot the PTEN antibody and store frozen at -20oC or colder. Avoid repeated freeze-thaw cycles.