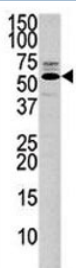


PTEN Antibody (F51133)

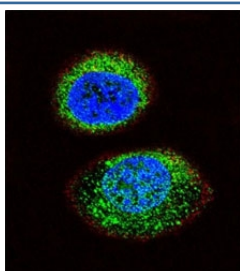
| Catalog No. | Formulation | Size |
|---------------|--|---------|
| F51133-0.4ML | In 1X PBS, pH 7.4, with 0.09% sodium azide | 0.4 ml |
| F51133-0.08ML | In 1X PBS, pH 7.4, with 0.09% sodium azide | 0.08 ml |

[Bulk quote request](#)

| | |
|---------------------------|---|
| Availability | 1-3 business days |
| Species Reactivity | Human |
| Format | Purified |
| Host | Rabbit |
| Clonality | Polyclonal (rabbit origin) |
| Isotype | Rabbit Ig |
| Purity | Purified |
| UniProt | P60484 |
| Applications | Western Blot : 1:1000 Immunofluorescence : 1:10-1:50 |
| Limitations | This PTEN antibody is available for research use only. |



Western blot analysis of PTEN antibody and 293 lysate.



Confocal immunofluorescent analysis of PTEN antibody with MCF-7 cells followed by Alexa Fluor 488-conjugated goat anti-rabbit IgG (green). Actin filaments have been labeled with Alexa Fluor 555 Phalloidin (red). DAPI was used as a nuclear counterstain (blue).

Description

Phosphatase and tensin homolog (PTEN) is a tumor suppressor. It acts as a dual-specificity protein phosphatase, dephosphorylating tyrosine-, serine- and threonine-phosphorylated proteins. [UniProt]

Application Notes

The stated application concentrations are suggested starting amounts. Titration of the PTEN antibody may be required due to differences in protocols and secondary/substrate sensitivity.

Immunogen

A portion of amino acids 371-403 from the human protein was used as the immunogen for this PTEN antibody.

Storage

Store at 4oC for up to one month. For long-term, aliquot the PTEN antibody and store frozen at -20oC or colder. Avoid repeated freeze-thaw cycles.