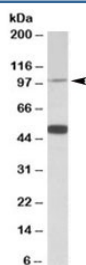


## PTCHD1 Antibody (R33444)

Catalog No.	Formulation	Size
R33444-100UG	0.5 mg/ml in 1X TBS, pH7.3, with 0.5% BSA (US sourced) and 0.02% sodium azide	100 ug

[Bulk quote request](#)

Availability	1-3 business days
Species Reactivity	Human
Predicted Reactivity	Cow, Dog, Mouse, Rat
Format	Antigen affinity purified
Host	Goat
Clonality	Polyclonal (goat origin)
Isotype	Goat Ig
Purity	Antigen affinity
Gene ID	139411
Applications	Western Blot : 0.5-2ug/ml ELISA (peptide) LOD : 1:16000
Limitations	This PTCHD1 antibody is available for research use only.



Western blot testing of human cerebellum lysate with PTCHD1 antibody at 0.5ug/ml. The expected ~100kDa band and the additional ~50kDa band are both blocked by the immunizing peptide.

## Description

Additional name(s) for this target protein: Patched domain containing 1

## Application Notes

Optimal dilution of the PTCHD1 antibody should be determined by the researcher.

## **Immunogen**

Amino acids DFQKTSRVSER were used as the immunogen for this PTCHD1 antibody.

## **Storage**

Aliquot and store the PTCHD1 antibody at -20oC.