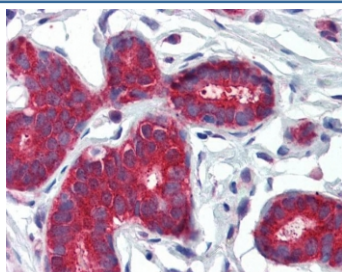


PTCH1 Antibody (R33870)

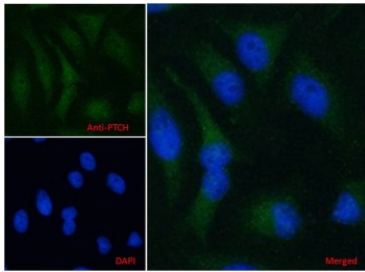
Catalog No.	Formulation	Size
R33870-100UG	0.5 mg/ml in 1X TBS, pH7.3, with 0.5% BSA (US sourced) and 0.02% sodium azide	100 ug

[Bulk quote request](#)

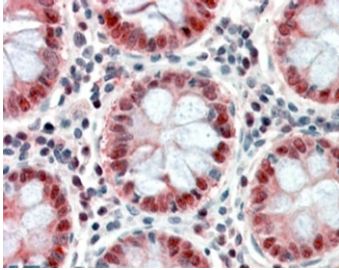
Availability	1-3 business days
Species Reactivity	Human
Predicted Reactivity	Mouse, Rat
Format	Antigen affinity purified
Clonality	Polyclonal (goat origin)
Isotype	Goat Ig
Purity	Antigen affinity
Gene ID	5727
Localization	Cytoplasmic, membrane
Applications	Immunohistochemistry (FFPE) : 3-6ug/ml IF/ICC : 5ug/ml ELISA (peptide) LOD : 1:8000
Limitations	This PTCH1 antibody is available for research use only.



IHC testing of FFPE human breast tissue with PTCH1 antibody at 3.75ug/ml. HIER: steamed with pH6 citrate buffer, AP-staining.



IF/ICC testing of human HeLa cells with PTCH1 antibody at 5ug/ml + DAPI nuclear stain (blue).



IHC testing of FFPE human colon tissue with PTCH1 antibody at 3.8ug/ml. HIER: steamed with pH6 citrate buffer, AP-staining.

Description

Additional name(s) for this target protein: Patched 1

Application Notes

Optimal dilution of the PTCH1 antibody should be determined by the researcher.

Immunogen

Amino acids ELQDVECEERPR were used as the immunogen for this PTCH1 antibody.

Storage

Aliquot and store the PTCH1 antibody at -20oC.