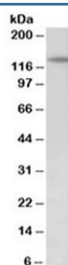


PTCH1 Antibody (R33752)

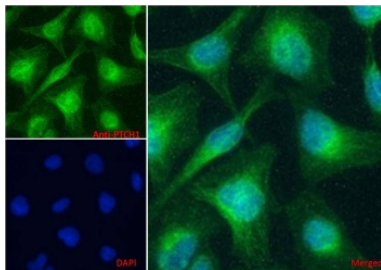
Catalog No.	Formulation	Size
R33752-100UG	0.5 mg/ml in 1X TBS, pH7.3, with 0.5% BSA (US sourced) and 0.02% sodium azide	100 ug

[Bulk quote request](#)

Availability	1-3 business days
Species Reactivity	Human, Mouse
Predicted Reactivity	Rat, Dog, Cow
Format	Antigen affinity purified
Host	Goat
Clonality	Polyclonal (goat origin)
Isotype	Goat Ig
Purity	Antigen affinity
UniProt	Q13635
Gene ID	5727
Localization	Cytoplasmic
Applications	Western Blot : 1-3ug/ml IF/ICC : 5ug/ml ELISA (peptide) LOD : 1:32000
Limitations	This PTCH1 antibody is available for research use only.



Western blot testing of mouse fetal kidney lysate with PTCH1 antibody at 2ug/ml. Predicted molecular weight ~161/154/144 kDa (isoforms L/M/S) with glycosylated PTCH1 visualized at ~200 kDa.



IF/ICC testing of human HeLa cells with Alexa Fluor 488 secondary (1ug/ml) and PTCH1 antibody (green, 5ug/ml). Blue = DAPI nuclear counterstain.

Description

Additional name(s) for this target protein: Patched 1; PTCH

Application Notes

Optimal dilution of the PTCH1 antibody should be determined by the researcher.

Immunogen

Amino acids EELKKINYQVDSWEE were used as the immunogen for this PTCH1 antibody. This sequence is common to the L, M and S isoforms of the protein.

Storage

Aliquot and store the PTCH1 antibody at -20oC.