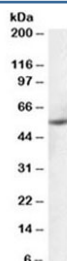


PTBP1 Antibody (R33455)

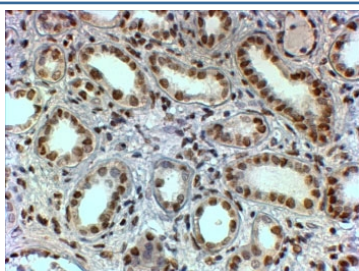
Catalog No.	Formulation	Size
R33455-100UG	0.5 mg/ml in 1X TBS, pH7.3, with 0.5% BSA (US sourced) and 0.02% sodium azide	100 ug

[Bulk quote request](#)

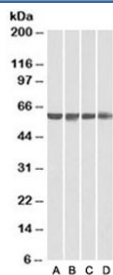
Availability	1-3 business days
Species Reactivity	Human, Mouse, Rat
Predicted Reactivity	Cow, Dog
Format	Antigen affinity purified
Clonality	Polyclonal (goat origin)
Isotype	Goat Ig
Purity	Antigen affinity
Gene ID	19205
Applications	Western Blot : 0.1-0.3ug/ml Immunohistochemistry (FFPE) : 2-4ug/ml ELISA (peptide) LOD : 1:32000
Limitations	This PTBP1 antibody is available for research use only.



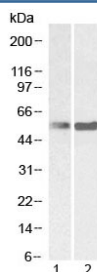
Western blot testing of human ovary lysate with PTBP1 antibody at 0.1ug/ml. Predicted molecular weight ~57 kDa.



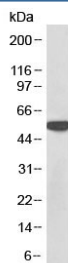
IHC staining of FFPE human kidney with PTBP1 antibody at 2ug/ml. HIER: steamed with pH9 Tris/EDTA buffer, HRP-staining.



Western blot of human A) HeLa, B) HepG2, C) Jurkat and D) HEK293 nuclear lysates with PTBP1 antibody at 0.01ug/ml. Predicted molecular weight ~57 kDa.



Western blot testing of 1) mouse ovary and 2) rat ovary lysate with PTBP1 antibody at 0.3ug/ml. Predicted molecular weight ~57 kDa.



Western blot testing of mouse NIH3T3 cell lysate with PTBP1 antibody at 0.03ug/ml. Predicted molecular weight ~57 kDa.

Description

Additional name(s) for this target protein: Polypyrimidine tract binding protein 1

Application Notes

Optimal dilution of the PTBP1 antibody should be determined by the researcher.

Immunogen

Amino acids DGIVPDIAVGTKR were used as the immunogen for this PTBP1 antibody.

Storage

Aliquot and store the PTBP1 antibody at -20oC.