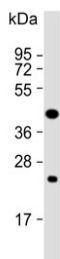


## PTAR1 Antibody (F54309)

Catalog No.	Formulation	Size
F54309-0.4ML	In 1X PBS, pH 7.4, with 0.09% sodium azide	0.4 ml
F54309-0.08ML	In 1X PBS, pH 7.4, with 0.09% sodium azide	0.08 ml

[Bulk quote request](#)

<b>Availability</b>	1-3 business days
<b>Species Reactivity</b>	Human
<b>Format</b>	Purified
<b>Host</b>	Rabbit
<b>Clonality</b>	Polyclonal (rabbit origin)
<b>Isotype</b>	Rabbit Ig
<b>Purity</b>	Antigen affinity purified
<b>UniProt</b>	Q7Z6K3
<b>Localization</b>	Cytoplasmic
<b>Applications</b>	Western Blot : 1:500-1:2000 Immunohistochemistry (FFPE) : 1:25 Flow Cytometry : 1:25 (1x10 <sup>6</sup> cells)
<b>Limitations</b>	This PTAR1 antibody is available for research use only.



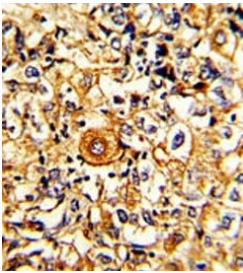
Western blot testing of human CCRF-CEM cell lysate with PTAR1 antibody. Expected molecular weight: 46-50 kDa.

kDa  
95  
72  
55  
36  
28  
17

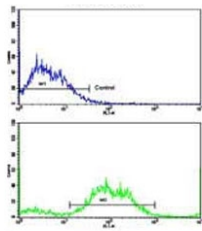
Western blot testing of human Jurkat cell lysate with PTAR1 antibody. Expected molecular weight: 46-50 kDa.

kDa  
95  
72  
55  
36  
28

Western blot testing of human HL60 cell lysate with PTAR1 antibody. Expected molecular weight: 46-50 kDa.



IHC testing of FFPE human breast carcinoma tissue with PTAR1 antibody. HIER: steam section in pH6 citrate buffer for 20 min and allow to cool prior to staining.



Flow cytometry testing of fixed and permeabilized human SK-BR-3 cells with PTAR1 antibody; Blue=isotype control, Green= PTAR1 antibody.

## Application Notes

The stated application concentrations are suggested starting points. Titration of the PTAR1 antibody may be required due to differences in protocols and secondary/substrate sensitivity.

## Immunogen

A portion of amino acids 60-89 from the human protein were used as the immunogen for the PTAR1 antibody.

## Storage

Aliquot the PTAR1 antibody and store frozen at -20oC or colder. Avoid repeated freeze-thaw cycles.

