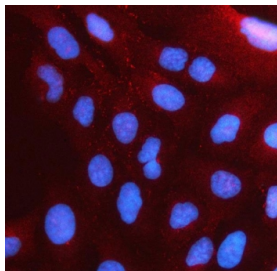


PSTPIP2 Antibody / Proline-serine-threonine phosphatase-interacting protein 2 (RQ8421)

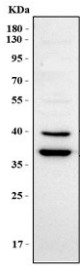
Catalog No.	Formulation	Size
RQ8421	0.5mg/ml if reconstituted with 0.2ml sterile DI water	100 ug

[Bulk quote request](#)

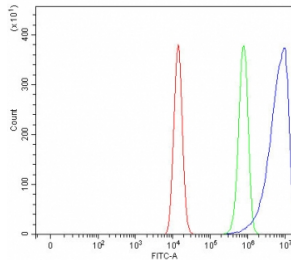
Availability	1-3 business days
Species Reactivity	Human
Format	Antigen affinity purified
Host	Rabbit
Clonality	Polyclonal (rabbit origin)
Isotype	Rabbit IgG
Purity	Antigen affinity purified
Buffer	Lyophilized from 1X PBS with 2% Trehalose
UniProt	Q9H939
Localization	Cytoplasm
Applications	Western Blot : 0.5-1ug/ml Immunofluorescence : 5ug/ml Flow Cytometry : 1-3ug/million cells Direct ELISA : 0.1-0.5ug/ml
Limitations	This PSTPIP2 antibody is available for research use only.



Immunofluorescent staining of FFPE human U-2 OS cells with PSTPIP2 antibody (red) and DAPI nuclear stain (blue). HIER: steam section in pH6 citrate buffer for 20 min.



Western blot testing of human HEL cell lysate with PSTPIP2 antibody. Predicted molecular weight ~39/36 kDa (two isoforms).



Flow cytometry testing of fixed and permeabilized human HEL cells with PSTPIP2 antibody at 1ug/million cells (blocked with goat sera); Red=cells alone, Green=isotype control, Blue= PSTPIP2 antibody.

Description

Proline-serine-threonine phosphatase-interacting protein 2 is an enzyme that in humans is encoded by the PSTPIP2 gene. Predicted to enable actin filament binding activity. Predicted to be involved in actin filament polymerization. Predicted to be located in cytoskeleton and membrane. Predicted to be active in actin filament; cytoplasm; and plasma membrane.

Application Notes

Optimal dilution of the PSTPIP2 antibody should be determined by the researcher.

Immunogen

An E.coli-derived human recombinant protein (M1-Q334) was used as the immunogen for the PSTPIP2 antibody.

Storage

After reconstitution, the PSTPIP2 antibody can be stored for up to one month at 4oC. For long-term, aliquot and store at -20oC. Avoid repeated freezing and thawing.