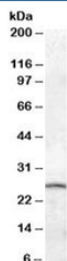


## PSPH Antibody (R35736)

Catalog No.	Formulation	Size
R35736-100UG	0.5 mg/ml in 1X TBS, pH7.3, with 0.5% BSA (US sourced) and 0.02% sodium azide	100 ug

[Bulk quote request](#)

Availability	1-3 business days
Species Reactivity	Human, Mouse
Predicted Reactivity	Rat
Format	Antigen affinity purified
Host	Goat
Clonality	Polyclonal (goat origin)
Isotype	Goat Ig
Purity	Antigen affinity
Gene ID	5723
Applications	Western Blot : 0.05-1ug/ml ELISA (peptide) LOD : 1:32000
Limitations	This PSPH antibody is available for research use only.



Western blot testing of mouse brain lysate with PSPH antibody at 0.05ug/ml.  
Predicted/observed molecular weight: ~26kDa.

## Description

Additional name(s) for this target protein: Phosphoserine phosphatase

## Application Notes

Optimal dilution of the PSPH antibody should be determined by the researcher.

## **Immunogen**

Amino acids RQQVKDNAKWYITD were used as the immunogen for this PSPH antibody.

## **Storage**

Aliquot and store the PSPH antibody at -20oC.