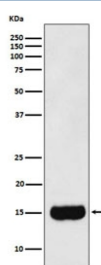


## PSP Antibody / Prostate Secretory Protein / MSMB [clone AFCD-13] (RQ5201)

Catalog No.	Formulation	Size
RQ5201	Antibody in PBS with 0.02% sodium azide, 50% glycerol and 0.4-0.5mg/ml BSA	100 ul

[Bulk quote request](#)

Availability	1-2 weeks
Species Reactivity	Human
Format	Purified
Clonality	Rabbit Monoclonal
Isotype	Rabbit IgG
Clone Name	AFCD-13
Purity	Affinity purified
UniProt	P08118
Applications	Western Blot : 1:1000-1:5000
Limitations	This MSMB antibody is available for research use only.



Western blot testing of human prostate cancer lysate with MSMB antibody. Predicted molecular weight ~13 kDa.

### Description

The protein encoded by the MSMB gene is a member of the immunoglobulin binding factor family. It is synthesized by the epithelial cells of the prostate gland and secreted into the seminal plasma. This protein has inhibin-like activity. It may have a role as an autocrine paracrine factor in uterine, breast and other female reproductive tissues. [RefSeq]

### Application Notes

Optimal dilution of the MSMB antibody should be determined by the researcher.

## **Immunogen**

A synthetic peptide specific to human MSMB was used as the immunogen for the MSMB antibody.

## **Storage**

Store the MSMB antibody at -20oC.