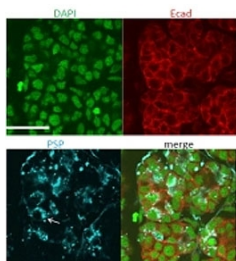


Psp Antibody / Parotid secretory protein (R34673)

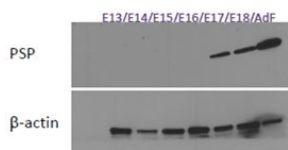
Catalog No.	Formulation	Size
R34673-100UG	0.5 mg/ml in 1X TBS, pH7.3, with 0.5% BSA (US sourced) and 0.02% sodium azide	100 ug

[Bulk quote request](#)

Availability	1-3 business days
Species Reactivity	Mouse
Format	Antigen affinity purified
Clonality	Polyclonal (goat origin)
Isotype	Goat Ig
Purity	Antigen affinity
Gene ID	19194
Applications	Western Blot : 1-3ug/ml Immunocytochemistry : 4-6ug/ml ELISA (peptide) LOD : 1:128000
Limitations	This Psp antibody is available for research use only.



ICC testing of mouse submandibular gland cells (in blue) with Psp antibody at 4ug/ml (counter staining of E-cadherin in red and nuclear in green).



Western blot of mouse mandibular gland cell lysates with Psp antibody at 1ug/ml. Response seen at E17 and onwards. Predicted/observed molecular weight: ~25kDa.

Description

Additional name(s) for this target protein: Parotid secretory protein; BPIFA2; BPI fold-containing family A member 2

Application Notes

Optimal dilution of the Psp antibody should be determined by the researcher.

Immunogen

Amino acids KTNAQTGLPEVTIGK were used as the immunogen for this Psp antibody.

Storage

Aliquot and store the Psp antibody at -20oC.