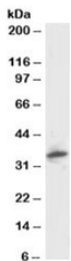


## PSMF1 Antibody / PI31 / Proteasome inhibitor PI31 subunit (R33470)

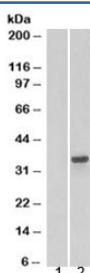
Catalog No.	Formulation	Size
R33470-100UG	0.5 mg/ml in 1X TBS, pH7.3, with 0.5% BSA (US sourced) and 0.02% sodium azide	100 ug

[Bulk quote request](#)

<b>Availability</b>	1-3 business days
<b>Species Reactivity</b>	Human
<b>Predicted Reactivity</b>	Mouse, Rat, Dog, Cow
<b>Format</b>	Antigen affinity purified
<b>Host</b>	Goat
<b>Clonality</b>	Polyclonal (goat origin)
<b>Isotype</b>	Goat Ig
<b>Purity</b>	Antigen affinity
<b>Gene ID</b>	9491
<b>Applications</b>	Western Blot : 1-3ug/ml ELISA (peptide) LOD : 1:32000
<b>Limitations</b>	This PSMF1 antibody is available for research use only.



Western blot testing of human kidney lysate and PSMF1 antibody at 1ug/ml. Predicted molecular weight: ~30kDa.



Western blot of HEK293 lysate overexpressing PSMF1 tested with PSMF1 antibody (mock transfection in lane 1). Predicted molecular weight: ~30kDa.

## Description

Additional name(s) for this target protein: Proteasome inhibitor PI31

## Application Notes

Optimal dilution of the PSMF1 antibody should be determined by the researcher.

1. This PSMF1 antibody is specific for isoform 1.

## Immunogen

Amino acids DHLPPPGYDDMYL were used as the immunogen for this PSMF1 antibody.

## Storage

Aliquot and store the PSMF1 antibody at -20oC.