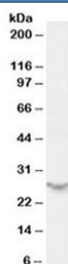


## PSME2 Antibody (R34856)

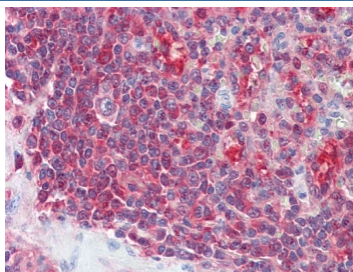
Catalog No.	Formulation	Size
R34856-100UG	0.5 mg/ml in 1X TBS, pH7.3, with 0.5% BSA (US sourced) and 0.02% sodium azide	100 ug

[Bulk quote request](#)

Availability	1-3 business days
Species Reactivity	Human
Predicted Reactivity	Mouse, Rat, Dog
Format	Antigen affinity purified
Host	Goat
Clonality	Polyclonal (goat origin)
Isotype	Goat Ig
Purity	Antigen affinity
Gene ID	5721
Localization	Cytoplasmic, nuclear, membrane
Applications	Western Blot : 0.5-1ug/ml IHC (FFPE) : 5ug/ml ELISA (peptide) LOD : 1:32000
Limitations	This PSME2 antibody is available for research use only.



Western blot testing of human spleen lysate with PSME2 antibody at 0.5ug/ml. Predicted molecular weight: ~27 kDa.



IHC testing of FFPE human spleen tissue with PSME2 antibody at 5ug/ml. Required HIER: steamed antigen retrieval with pH6 citrate buffer; AP-staining.

## Description

Additional name(s) for this target protein: Proteasome (prosome, macropain) activator subunit 2 (PA28 beta)

## Application Notes

Optimal dilution of the PSME2 antibody should be determined by the researcher.

## Immunogen

Amino acids NLEKIVNPKGEEKP were used as the immunogen for this PSME2 antibody.

## Storage

Aliquot and store the PSME2 antibody at -20oC.