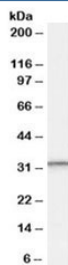


PSME1 Antibody (R34541)

Catalog No.	Formulation	Size
R34541-100UG	0.5 mg/ml in 1X TBS, pH7.3, with 0.5% BSA (US sourced) and 0.02% sodium azide	100 ug

[Bulk quote request](#)

Availability	1-3 business days
Species Reactivity	Human
Predicted Reactivity	Dog, Mouse, Rat
Format	Antigen affinity purified
Host	Goat
Clonality	Polyclonal (goat origin)
Isotype	Goat Ig
Purity	Antigen affinity
Gene ID	5720
Applications	Western Blot : 0.3-1ug/ml ELISA (peptide) LOD : 1:64000
Limitations	This PSME1 antibody is available for research use only.



Western blot testing of human peripheral blood mononucleocyte lysate with PSME1 antibody at 0.3ug/ml. Predicted molecular weight: ~29kDa.

Description

Additional name(s) for this target protein: Proteasome activator subunit 1

Application Notes

Optimal dilution of the PSME1 antibody should be determined by the researcher.

1. This PSME1 antibody is specific for isoform 1.

Immunogen

Amino acids KNFEKLKKPRGETK were used as the immunogen for this PSME1 antibody.

Storage

Aliquot and store the PSME1 antibody at -20oC.