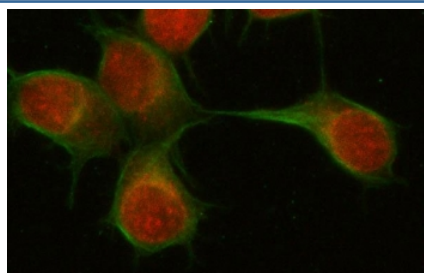


PSMD6 Antibody / 26S proteasome non-ATPase regulatory subunit 6 (RQ8185)

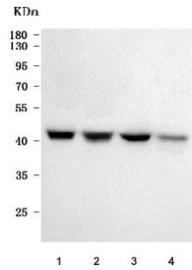
Catalog No.	Formulation	Size
RQ8185	0.5mg/ml if reconstituted with 0.2ml sterile DI water	100 ug

[Bulk quote request](#)

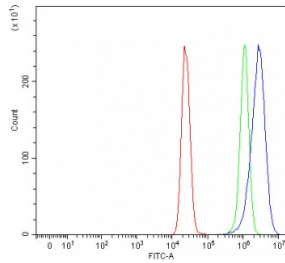
Availability	1-3 business days
Species Reactivity	Human
Format	Antigen affinity purified
Host	Rabbit
Clonality	Polyclonal (rabbit origin)
Isotype	Rabbit IgG
Purity	Antigen affinity purified
Buffer	Lyophilized from 1X PBS with 2% Trehalose
UniProt	Q15008
Localization	Nuclear, cytoplasmic, extracellular
Applications	Western Blot : 0.5-1ug/ml Immunofluorescence : 5ug/ml Flow Cytometry : 1-3ug/million cells Direct ELISA : 0.1-0.5ug/ml
Limitations	This PSMD6 antibody is available for research use only.



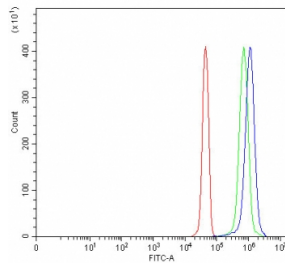
Immunofluorescent staining of FFPE human U-2 OS cells with PAPSS2 antibody (red) and Beta Tubulin mAb (green). HIER: steam section in pH6 citrate buffer for 20 min.



Western blot testing of human 1) HeLa, 2) RT4, 3) U-251 and 4) Jurkat cell lysate with PSMD6 antibody. Predicted molecular weight: 41-52 kDa (multiple isoforms).



Flow cytometry testing of fixed and permeabilized human MCF7 cells with PSMD6 antibody at 1ug/million cells (blocked with goat sera); Red=cells alone, Green=isotype control, Blue= PSMD6 antibody.



Flow cytometry testing of fixed and permeabilized human JK cells with PSMD6 antibody at 1ug/million cells (blocked with goat sera); Red=cells alone, Green=isotype control, Blue= PSMD6 antibody.

Description

26S proteasome non-ATPase regulatory subunit 6 is an enzyme that in humans is encoded by the PSMD6 gene. This gene encodes a member of the protease subunit S10 family. The encoded protein is a subunit of the 26S proteasome which colocalizes with DNA damage foci and is involved in the ATP-dependent degradation of ubiquitinated proteins. Alternative splicing results in multiple transcript variants.

Application Notes

Optimal dilution of the PSMD6 antibody should be determined by the researcher.

Immunogen

E. coli-derived recombinant human protein (amino acids E30-Q381) was used as the immunogen for the PSMD6 antibody.

Storage

After reconstitution, the PSMD6 antibody can be stored for up to one month at 4oC. For long-term, aliquot and store at -20oC. Avoid repeated freezing and thawing.

