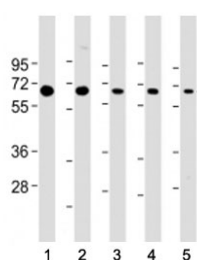


PSMD3 Antibody (C-Terminal Region) (F54072)

Catalog No.	Formulation	Size
F54072-0.2ML	In 1X PBS, pH 7.4, with 0.09% sodium azide	0.2 ml
F54072-0.05ML	In 1X PBS, pH 7.4, with 0.09% sodium azide	0.05 ml

[Bulk quote request](#)

Availability	1-3 business days
Species Reactivity	Human, Mouse
Predicted Reactivity	Bovine
Format	Antigen affinity purified
Clonality	Polyclonal (rabbit origin)
Isotype	Rabbit Ig
Purity	Antigen affinity
UniProt	O43242
Applications	Western Blot : 1:2000
Limitations	This PSMD3 antibody is available for research use only.



Western blot testing of PSMD3 antibody at 1:2000: Lane 1) human Jurkat, 2) (h) HeLa, 3) (h) HepG2, 4) (h) MCF-7 and 5) mouse NIH3T3 cell lysate. Predicted molecular weight ~61 kDa.

Description

PSMD3 or Proteasome 26S S3 acts as a regulatory subunit of the 26 proteasome which is involved in the ATP-dependent degradation of ubiquitinated proteins. [UniProt]

Application Notes

The stated application concentrations are suggested starting points. Titration of the PSMD3 antibody may be required due to differences in protocols and secondary/substrate sensitivity.

Immunogen

A portion of amino acids 482-515 from human PSMD3 was used as the immunogen for the PSMD3 antibody.

Storage

Aliquot the PSMD3 antibody and store frozen at -20oC or colder. Avoid repeated freeze-thaw cycles.