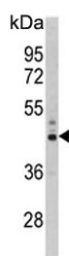


PSMD13 Antibody / 26S proteasome non-ATPase regulatory subunit 13 (F54792)

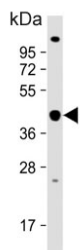
Catalog No.	Formulation	Size
F54792-0.4ML	In 1X PBS, pH 7.4, with 0.09% sodium azide	0.4 ml
F54792-0.08ML	In 1X PBS, pH 7.4, with 0.09% sodium azide	0.08 ml

[Bulk quote request](#)

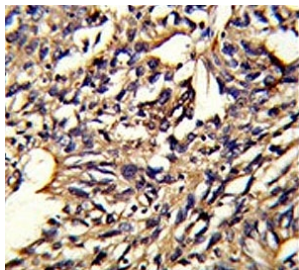
Availability	1-3 business days
Species Reactivity	Human
Format	Purified
Host	Rabbit
Clonality	Polyclonal (rabbit origin)
Isotype	Rabbit Ig
Purity	Antigen affinity purified
UniProt	Q9UNM6
Localization	Cytoplasmic, nuclear
Applications	Flow Cytometry : 1:10-1:50 (1x10e6 cells) Immunohistochemistry (FFPE) : 1:50-1:100 Western Blot : 1:500-1:1000
Limitations	This PSMD13 antibody is available for research use only.



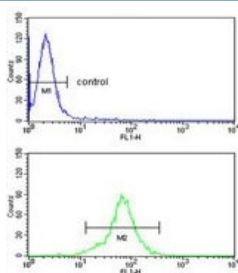
Western blot testing of human Y79 cell lysate with PSMD13 antibody. Predicted molecular weight ~43 kDa.



Western blot testing of human Jurkat cell lysate with PSMD13 antibody. Predicted molecular weight ~43 kDa.



IHC testing of FFPE human lung carcinoma tissue with PSMD13 antibody. HIER: steam section in pH6 citrate buffer for 20 min and allow to cool prior to staining.



Flow cytometry testing of human HEK293 cells with PSMD13 antibody; Blue=isotype control, Green= PSMD13 antibody.

Description

PSMD13 acts as a regulatory subunit of the 26S proteasome which is involved in the ATP-dependent degradation of ubiquitinated proteins.

Application Notes

The stated application concentrations are suggested starting points. Titration of the PSMD13 antibody may be required due to differences in protocols and secondary/substrate sensitivity.

Immunogen

A portion of amino acids 269-298 from the human protein was used as the immunogen for the PSMD13 antibody.

Storage

Aliquot the PSMD13 antibody and store frozen at -20oC or colder. Avoid repeated freeze-thaw cycles.