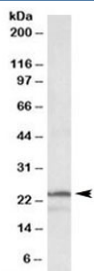


PSMB3 Antibody (R34864)

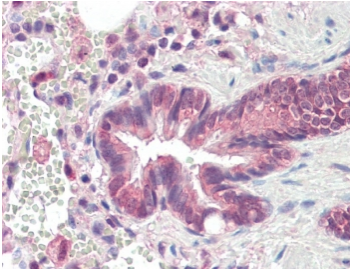
Catalog No.	Formulation	Size
R34864-100UG	0.5 mg/ml in 1X TBS, pH7.3, with 0.5% BSA (US sourced) and 0.02% sodium azide	100 ug

[Bulk quote request](#)

Availability	1-3 business days
Species Reactivity	Human
Predicted Reactivity	Mouse, Rat, Dog, Pig, Cow
Format	Antigen affinity purified
Host	Goat
Clonality	Polyclonal (goat origin)
Isotype	Goat Ig
Purity	Antigen affinity
Gene ID	5691
Localization	Cytoplasmic, nuclear
Applications	Western Blot : 1-3ug/ml IHC (FFPE) : 10ug/ml ELISA (peptide) LOD : 1:16000
Limitations	This PSMB3 antibody is available for research use only.



Western blot testing of K562 lysate with PSMB3 antibody at 1ug/ml. Predicted molecular weight: ~23 kDa.



IHC testing of FFPE human lung tissue with PSMB3 antibody at 10ug/ml. Required HIER: steamed antigen retrieval with pH6 citrate buffer; AP-staining.

Description

Additional name(s) for this target protein: Proteasome (prosome, macropain) subunit, beta type, 3

Application Notes

Optimal dilution of the PSMB3 antibody should be determined by the researcher.

Immunogen

Amino acids NLYELKEGRQ were used as the immunogen for this PSMB3 antibody.

Storage

Aliquot and store the PSMB3 antibody at -20oC.