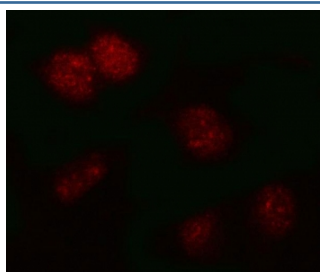


## PSMB2 Antibody / Proteasome subunit beta type 2 (RQ8148)

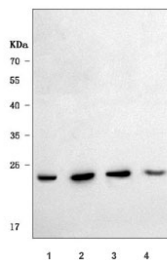
Catalog No.	Formulation	Size
RQ8148	0.5mg/ml if reconstituted with 0.2ml sterile DI water	100 ug

**Bulk quote request**

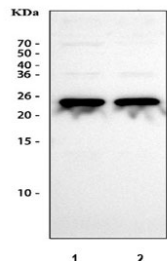
<b>Availability</b>	1-3 business days
<b>Species Reactivity</b>	Human
<b>Format</b>	Antigen affinity purified
<b>Host</b>	Rabbit
<b>Clonality</b>	Polyclonal (rabbit origin)
<b>Isotype</b>	Rabbit IgG
<b>Purity</b>	Antigen affinity purified
<b>Buffer</b>	Lyophilized from 1X PBS with 2% Trehalose
<b>UniProt</b>	P49721
<b>Localization</b>	Cytoplasmic, nuclear
<b>Applications</b>	Western Blot : 0.5-1ug/ml Immunofluorescence : 5ug/ml Direct ELISA : 0.1-0.5ug/ml
<b>Limitations</b>	This PSMB2 antibody is available for research use only.



Immunofluorescent staining of FFPE human HeLa cells with PSMB2 antibody (red).  
HIER: steam section in pH6 citrate buffer for 20 min.



Western blot testing of human 1) 293T, 2) HeLa, 3) Jurkat and 4) human placenta tissue lysate with PSMB2 antibody. Predicted molecular weight ~23 kDa.



Western blot testing of human 1) HeLa and 2) 293T cell lysate with PSMB2 antibody. Predicted molecular weight ~23 kDa.

## Description

Proteasome subunit beta type-2 also known as 20S proteasome subunit beta-4 (based on systematic nomenclature) is a protein that in humans is encoded by the PSMB2 gene. The proteasome is a multicatalytic proteinase complex with a highly ordered ring-shaped 20S core structure. The core structure is composed of 4 rings of 28 non-identical subunits; 2 rings are composed of 7 alpha subunits and 2 rings are composed of 7 beta subunits. Proteasomes are distributed throughout eukaryotic cells at a high concentration and cleave peptides in an ATP/ubiquitin-dependent process in a non-lysosomal pathway. An essential function of a modified proteasome, the immunoproteasome, is the processing of class I MHC peptides. This gene encodes a member of the proteasome B-type family, also known as the T1B family, that is a 20S core beta subunit. Multiple alternatively spliced transcript variants encoding distinct isoforms have been found for this gene.

## Application Notes

Optimal dilution of the PSMB2 antibody should be determined by the researcher.

## Immunogen

E. coli-derived recombinant human protein (amino acids M1-S201) was used as the immunogen for the PSMB2 antibody.

## Storage

After reconstitution, the PSMB2 antibody can be stored for up to one month at 4°C. For long-term, aliquot and store at -20°C. Avoid repeated freezing and thawing.