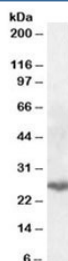


## PSMB10 Antibody (R35169)

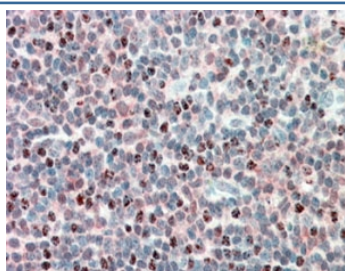
Catalog No.	Formulation	Size
R35169-100UG	0.5 mg/ml in 1X TBS, pH7.3, with 0.5% BSA (US sourced) and 0.02% sodium azide	100 ug

[Bulk quote request](#)

Availability	1-3 business days
Species Reactivity	Human
Format	Antigen affinity purified
Host	Goat
Clonality	Polyclonal (goat origin)
Isotype	Goat Ig
Purity	Antigen affinity
Gene ID	5699
Applications	Western Blot : 0.3-1ug/ml Immunohistochemistry (FFPE) : 5-10ug/ml ELISA (peptide) LOD : 1:8000
Limitations	This PSMB10 antibody is available for research use only.



Western blot testing of human lung lysate with PSMB10 antibody at 0.3ug/ml. Predicted molecular weight: ~29kDa.



IHC staining of FFPE human tonsil with PSMB10 antibody at 5ug/ml. HIER: steamed with pH6 citrate buffer, AP-staining.

## Description

Additional name(s) for this target protein: Proteasome (prosome, macropain) subunit, beta type, 10

## Application Notes

Optimal dilution of the PSMB10 antibody should be determined by the researcher.

## Immunogen

Amino acids PTEPVKRSGRYH were used as the immunogen for this PSMB10 antibody.

## Storage

Aliquot and store the PSMB10 antibody at -20oC.