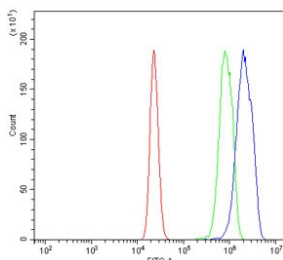


## Psmb1 Antibody / Proteasome subunit beta type 1 (RQ6511)

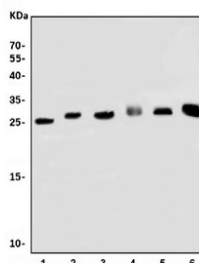
Catalog No.	Formulation	Size
RQ6511	0.5mg/ml if reconstituted with 0.2ml sterile DI water	100 ug

[Bulk quote request](#)

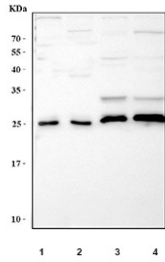
<b>Availability</b>	1-3 business days
<b>Species Reactivity</b>	Human, Mouse, Rat
<b>Format</b>	Antigen affinity purified
<b>Host</b>	Rabbit
<b>Clonality</b>	Polyclonal (rabbit origin)
<b>Isotype</b>	Rabbit IgG
<b>Purity</b>	Affinity purified
<b>Buffer</b>	Lyophilized from 1X PBS with 2% Trehalose
<b>UniProt</b>	O09061
<b>Applications</b>	Western Blot : 1-2ug/ml Flow Cytometry : 1-3ug/million cells Direct ELISA : 0.1-0.5ug/ml
<b>Limitations</b>	This Psmb1 antibody is available for research use only.



Flow cytometry testing of mouse RAW264.7 cells with Psmb1 antibody at 1ug/million cells (blocked with goat sera); Red=cells alone, Green=isotype control, Blue= Psmb1 antibody.



Western blot testing of 1) rat stomach, 2) rat kidney, 3) rat testis, 4) rat C6, 5) mouse kidney and 6) mouse NIH 3T3 cell lysate with Psmb1 antibody. Predicted molecular weight ~26 kDa.



Western blot testing of 1) human HepG2, 2) human MCF7, 3) rat liver and 4) mouse liver tissue lysate with Psmb1 antibody. Predicted molecular weight ~26 kDa.

## Description

Proteasome subunit beta type-1 also known as 20S proteasome subunit beta-6 (based on systematic nomenclature) is a protein that in humans is encoded by the PSMB1 gene. The proteasome is a multicatalytic proteinase complex with a highly ordered ring-shaped 20S core structure. The core structure is composed of 4 rings of 28 non-identical subunits; 2 rings are composed of 7 alpha subunits and 2 rings are composed of 7 beta subunits. Proteasomes are distributed throughout eukaryotic cells at a high concentration and cleave peptides in an ATP/ubiquitin-dependent process in a non-lysosomal pathway. An essential function of a modified proteasome, the immunoproteasome, is the processing of class I MHC peptides. This gene encodes a member of the proteasome B-type family, also known as the T1B family, that is a 20S core beta subunit. This gene is tightly linked to the TBP (TATA-binding protein) gene in human and in mouse, and is transcribed in the opposite orientation in both species.

## Application Notes

Optimal dilution of the Psmb1 antibody should be determined by the researcher.

## Immunogen

An E. coli-derived mouse protein (amino acids S21-D240) was used as the immunogen for the Psmb1 antibody.

## Storage

After reconstitution, the Psmb1 antibody can be stored for up to one month at 4°C. For long-term, aliquot and store at -20°C. Avoid repeated freezing and thawing.