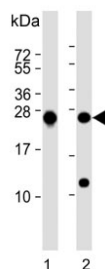


## PSMB1 Antibody / Proteasome subunit beta type-1 (F54465)

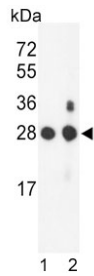
Catalog No.	Formulation	Size
F54465-0.4ML	In 1X PBS, pH 7.4, with 0.09% sodium azide	0.4 ml
F54465-0.08ML	In 1X PBS, pH 7.4, with 0.09% sodium azide	0.08 ml

[Bulk quote request](#)

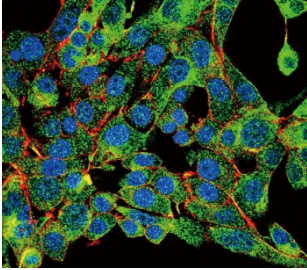
<b>Availability</b>	1-3 business days
<b>Species Reactivity</b>	Human, Mouse
<b>Format</b>	Purified
<b>Host</b>	Rabbit
<b>Clonality</b>	Polyclonal (rabbit origin)
<b>Isotype</b>	Rabbit Ig
<b>Purity</b>	Antigen affinity purified
<b>UniProt</b>	P20618
<b>Localization</b>	Cytoplasmic, nuclear
<b>Applications</b>	Flow Cytometry : 1:25 (1x10 <sup>6</sup> cells) Immunofluorescence : 1:25 Immunohistochemistry (FFPE) : 1:25 Western Blot : 1:500-1:2000
<b>Limitations</b>	This PSMB1 antibody is available for research use only.



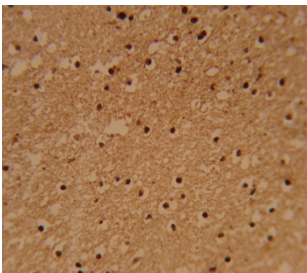
Western blot testing of human 1) K562 and 2) MCF7 cell lysate with PSMB1 antibody.  
Predicted molecular weight ~26 kDa.



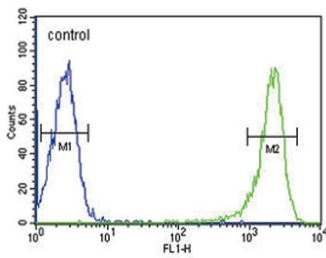
Western blot testing of mouse 1) NIH 3T3 and 2) bladder lysate with PSMB1 antibody. Predicted molecular weight ~26 kDa.



Immunofluorescent staining of human HepG2 cells with PSMB1 antibody (green), DAPI nuclear stain (blue) and anti-Actin (red).



IHC testing of FFPE human brain tissue with PSMB1 antibody. HIER: steam section in pH6 citrate buffer for 20 min and allow to cool prior to staining.



Flow cytometry testing of human HL60 cells with PSMB1 antibody; Blue=isotype control, Green= PSMB1 antibody.

## Description

PSMB1 is a multicatalytic proteinase complex with a highly ordered ring-shaped 20S core structure. The core structure is composed of 4 rings of 28 non-identical subunits; 2 rings are composed of 7 alpha subunits and 2 rings are composed of 7 beta subunits. Proteasomes are distributed throughout eukaryotic cells at a high concentration and cleave peptides in an ATP/ubiquitin-dependent process in a non-lysosomal pathway. An essential function of a modified proteasome, the immunoproteasome, is the processing of class I MHC peptides.

## Application Notes

The stated application concentrations are suggested starting points. Titration of the PSMB1 antibody may be required due to differences in protocols and secondary/substrate sensitivity.

## Immunogen

A portion of amino acids 214-241 from the human protein was used as the immunogen for the PSMB1 antibody.

## Storage

Aliquot the PSMB1 antibody and store frozen at -20oC or colder. Avoid repeated freeze-thaw cycles.

