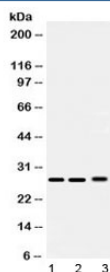


## PSMA3 Antibody / Proteasome 20S alpha 3 (R32557)

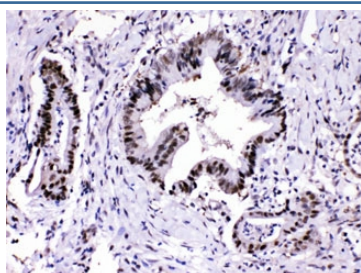
| Catalog No. | Formulation   | Size   |
|-------------|---|--------|
| R32557      | 0.5mg/ml if reconstituted with 0.2ml sterile DI water | 100 ug |

**Bulk quote request**

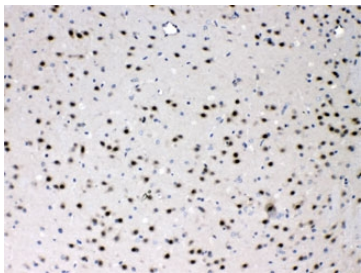
|                           |   |
|---------------------------|---|
| <b>Availability</b>       | 1-3 business days   |
| <b>Species Reactivity</b> | Human, Mouse, Rat   |
| <b>Format</b>             | Antigen affinity purified   |
| <b>Clonality</b>          | Polyclonal (rabbit origin)  |
| <b>Isotype</b>            | Rabbit IgG  |
| <b>Purity</b>             | Antigen affinity  |
| <b>Buffer</b>             | Lyophilized from 1X PBS with 2.5% BSA and 0.025% sodium azide   |
| <b>UniProt</b>            | P25788  |
| <b>Localization</b>       | Cytoplasmic, nuclear  |
| <b>Applications</b>       | Western Blot : 0.5-1ug/ml<br>Immunohistochemistry (FFPE) : 1-2ug/ml<br>Flow Cytometry : 1-3ug/10 <sup>6</sup> cells |
| <b>Limitations</b>        | This PSMA3 antibody is available for research use only.   |



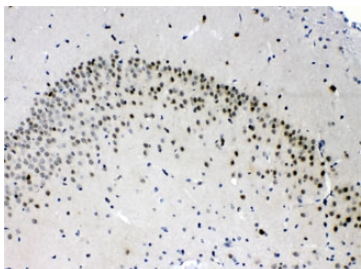
Western blot testing of 1) rat testis, 2) mouse lung and 3) human 293T lysate with PSMA3 antibody at 0.5ug/ml. Predicted/observed molecular weight ~28 kDa.



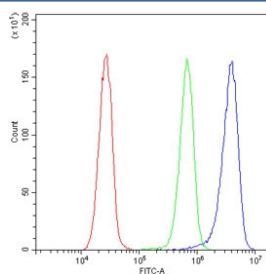
IHC testing of FFPE human intestine cancer tissue with PSMA3 antibody at 1ug/ml. HIER: steam section in pH6 citrate buffer for 20 min.



IHC testing of FFPE mouse brain with PSMA3 antibody at 1ug/ml. HIER: steam section in pH6 citrate buffer for 20 min.



IHC testing of FFPE rat brain with PSMA3 antibody at 1ug/ml. HIER: steam section in pH6 citrate buffer for 20 min.



Flow cytometry testing of human HeLa cells with PSMA3 antibody at 1ug/10<sup>6</sup> cells (blocked with goat sera); Red=cells alone, Green=isotype control, Blue= PSMA3 antibody.

## Description

Proteasome subunit alpha type-3, also known as macropain subunit C8 and proteasome component C8, is a protein that in humans is encoded by the PSMA3 gene. The proteasome is a multicatalytic proteinase complex with a highly ordered ring-shaped 20S core structure. The core structure is composed of 4 rings of 28 non-identical subunits; 2 rings are composed of 7 alpha subunits and 2 rings are composed of 7 beta subunits. Proteasomes are distributed throughout eukaryotic cells at a high concentration and cleave peptides in an ATP/ubiquitin-dependent process in a non-lysosomal pathway. An essential function of a modified proteasome, the immunoproteasome, is the processing of class I MHC peptides. This gene encodes a member of the peptidase T1A family, that is a 20S core alpha subunit. Two alternative transcripts encoding different isoforms have been identified.

## Application Notes

Differences in protocols and secondary/substrate sensitivity may require the PSMA3 antibody to be titrated for optimal performance.

## Immunogen

Amino acids 88-127 (LADIAREEASNFRSNGFYNIPLKHLADRVAMYVHAYTLYS) from the human protein were used as the immunogen for the PSMA3 antibody.

## Storage

After reconstitution, the PSMA3 antibody can be stored for up to one month at 4oC. For long-term, aliquot and store at -20oC. Avoid repeated freezing and thawing.

