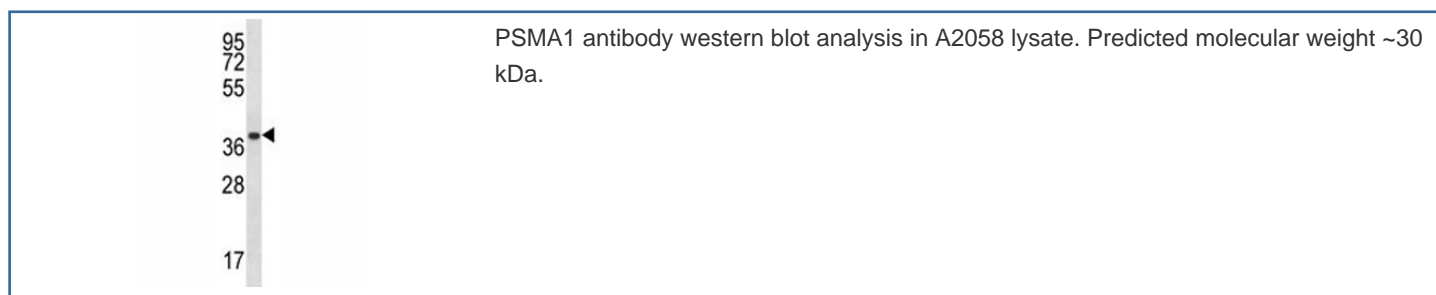


PSMA1 Antibody (F43982)

Catalog No.	Formulation	Size
F43982-0.4ML	In 1X PBS, pH 7.4, with 0.09% sodium azide	0.4 ml
F43982-0.08ML	In 1X PBS, pH 7.4, with 0.09% sodium azide	0.08 ml

[Bulk quote request](#)

Availability	1-3 business days
Species Reactivity	Human
Predicted Reactivity	Bovine, Primate
Format	Antigen affinity purified
Clonality	Polyclonal (rabbit origin)
Isotype	Rabbit Ig
Purity	Antigen affinity
UniProt	P25786
Localization	Cytoplasmic, nuclear
Applications	Western Blot : 1:1000
Limitations	This PSMA1 antibody is available for research use only.



Description

The proteasome is a multicatalytic proteinase complex with a highly ordered ring-shaped 20S core structure. The core structure is composed of 4 rings of 28 non-identical subunits; 2 rings are composed of 7 alpha subunits and 2 rings are composed of 7 beta subunits. Proteasomes are distributed throughout eukaryotic cells at a high concentration and cleave peptides in an ATP/ubiquitin-dependent process in a non-lysosomal pathway. An essential function of a modified proteasome, the immunoproteasome, is the processing of class I MHC peptides. This gene encodes a member of the

peptidase T1A family, that is a 20S core alpha subunit. Alternative splicing results in multiple transcript variants encoding distinct isoforms.

Application Notes

Titration of the PSMA1 antibody may be required due to differences in protocols and secondary/substrate sensitivity.

Immunogen

A portion of amino acids 234-262 from the human protein was used as the immunogen for this PSMA1 antibody.

Storage

Aliquot the PSMA1 antibody and store frozen at -20oC or colder. Avoid repeated freeze-thaw cycles.