

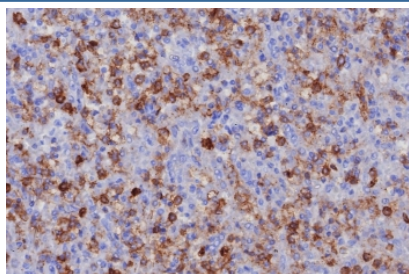
PSGL-1 Antibody / CD162 [clone PSGL1/8192R] (V4317)

| Catalog No. | Formulation | Size |
|----------------|---|--------|
| V4317-100UG | 0.2 mg/ml in 1X PBS with 0.1 mg/ml BSA (US sourced), 0.05% sodium azide | 100 ug |
| V4317-20UG | 0.2 mg/ml in 1X PBS with 0.1 mg/ml BSA (US sourced), 0.05% sodium azide | 20 ug |
| V4317SAF-100UG | 1 mg/ml in 1X PBS; BSA free, sodium azide free | 100 ug |

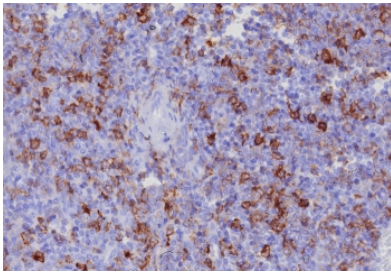
Recombinant **RABBIT MONOCLONAL**

[Bulk quote request](#)

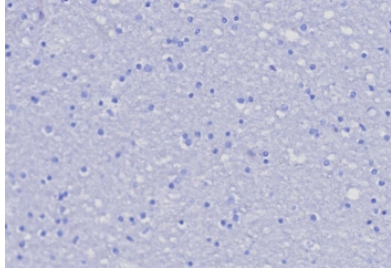
| | |
|--------------------|---|
| Availability | 1-3 business days |
| Species Reactivity | Human |
| Format | Purified |
| Host | Rabbit |
| Clonality | Recombinant Rabbit Monoclonal |
| Isotype | Rabbit IgG, kappa |
| Clone Name | PSGL1/8192R |
| Purity | Protein A/G affinity |
| UniProt | Q14242 |
| Localization | Cell surface |
| Applications | Immunohistochemistry (FFPE) : 1-2ug/ml for 30 minutes at RT |
| Limitations | This PSGL-1 antibody is available for research use only. |



IHC staining of FFPE human spleen tissue with PSGL-1 antibody (clone PSGL1/8192R).
HIER: boil tissue sections in pH 9 10mM Tris with 1mM EDTA for 20 min and allow to cool before testing.



IHC staining of FFPE human tonsil tissue with PSGL-1 antibody (clone PSGL1/8192R).
HIER: boil tissue sections in pH 9 10mM Tris with 1mM EDTA for 20 min and allow to cool before testing.



Negative control: IHC testing of FFPE human brain tissue with PSGL1 antibody (clone PSGL1/8192R) at 2ug/ml. HIER: boil tissue sections in pH 9 10mM Tris with 1mM EDTA for 20 min and allow to cool before testing.

Description

CD162 glycoprotein functions as a high affinity counter-receptor for the cell adhesion molecules P-, E- and L- selectin expressed on myeloid cells and stimulated T lymphocytes. As such, this protein plays a critical role in leukocyte trafficking during inflammation by tethering of leukocytes to activated platelets or endothelia expressing selectins. This protein requires two post-translational modifications, tyrosine sulfation and the addition of the sialyl Lewis x tetrasaccharide (sLex) to its O-linked glycans, for its high-affinity binding activity. Aberrant expression of this gene and polymorphisms in this gene are associated with defects in the innate and adaptive immune response.

Application Notes

Optimal dilution of the PSGL-1 antibody should be determined by the researcher.

Immunogen

Recombinant full-length human protein was used as the immunogen for the PSGL-1 antibody.

Storage

Aliquot the PSGL-1 antibody and store frozen at -20oC or colder. Avoid repeated freeze-thaw cycles.