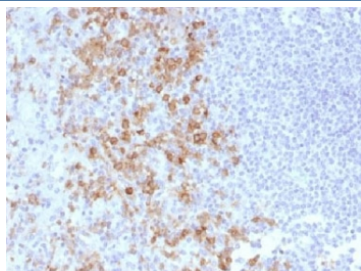


PSGL-1 Antibody / CD162 [clone PSGL1/1601] (V3226)

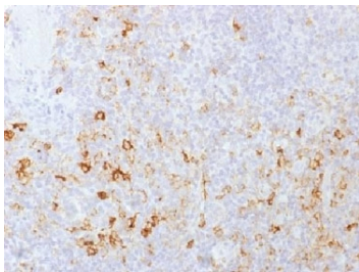
Catalog No.	Formulation	Size
V3226-100UG	0.2 mg/ml in 1X PBS with 0.1 mg/ml BSA (US sourced) and 0.05% sodium azide	100 ug
V3226-20UG	0.2 mg/ml in 1X PBS with 0.1 mg/ml BSA (US sourced) and 0.05% sodium azide	20 ug
V3226SAF-100UG	1 mg/ml in 1X PBS; BSA free, sodium azide free	100 ug

[Bulk quote request](#)

Availability	1-3 business days
Species Reactivity	Human
Format	Purified
Host	Mouse
Clonality	Monoclonal (mouse origin)
Isotype	Mouse IgG1, kappa
Clone Name	PSGL1/1601
Purity	Protein G affinity
UniProt	Q14242
Localization	Cell surface
Applications	Immunohistochemistry (FFPE) : 0.5-1ug/ml for 30 min at RT
Limitations	This PSGL-1 antibody is available for research use only.



IHC testing of FFPE human spleen with PSGL-1 antibody (clone PSGL1/1601).
Recommended HIER: boil tissue sections in 10mM Tris with 1mM EDTA, pH 9.0 for 10-20 min.



IHC testing of FFPE human tonsil with PSGL-1 antibody (clone PSG1/1601).
Recommended HIER: boil tissue sections in 10mM Tris with 1mM EDTA, pH 9.0 for 10-20 min.

Description

P selectin glycoprotein ligand 1 (PSGL-1), also called CD162 glycoprotein, functions as a high affinity counter-receptor for the cell adhesion molecules P-, E- and L- selectin expressed on myeloid cells and stimulated T lymphocytes. As such, this protein plays a critical role in leukocyte trafficking during inflammation by tethering of leukocytes to activated platelets or endothelia expressing selectins. This protein requires two post-translational modifications, tyrosine sulfation and the addition of the sialyl Lewis x tetrasaccharide (sLex) to its O-linked glycans, for its high-affinity binding activity. Aberrant expression of this gene and polymorphisms in this gene are associated with defects in the innate and adaptive immune response.

Application Notes

Optimal dilution of the PSGL-1 antibody should be determined by the researcher.

Immunogen

Recombinant human PSGL-1 protein was used as the immunogen for the PSGL-1 antibody.

Storage

Store the PSGL-1 antibody at 2-8oC (with azide) or aliquot and store at -20oC or colder (without azide).