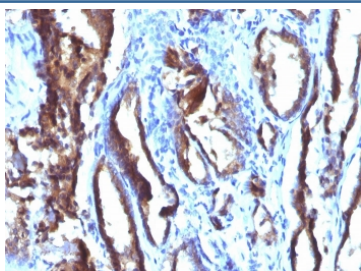


## PSA Antibody / Prostate Specific Antigen [clone 3E6.] (V7880)

Catalog No.	Formulation	Size
V7880-100UG	0.2 mg/ml in 1X PBS with 0.1 mg/ml BSA (US sourced) and 0.05% sodium azide	100 ug
V7880-20UG	0.2 mg/ml in 1X PBS with 0.1 mg/ml BSA (US sourced) and 0.05% sodium azide	20 ug
V7880SAF-100UG	1 mg/ml in 1X PBS; BSA free, sodium azide free	100 ug

**Bulk quote request**

<b>Availability</b>	1-3 business days
<b>Species Reactivity</b>	Human
<b>Format</b>	Purified
<b>Host</b>	Mouse
<b>Clonality</b>	Monoclonal (mouse origin)
<b>Isotype</b>	Mouse IgG1, kappa
<b>Clone Name</b>	3E6.
<b>Purity</b>	Protein G affinity chromatography
<b>UniProt</b>	P07288
<b>Localization</b>	Cytoplasmic
<b>Applications</b>	Immunofluorescence : 1-2ug/ml Immunohistochemistry (FFPE) : 1-2ug/ml
<b>Limitations</b>	This PSA antibody is available for research use only.



IHC staining of FFPE human prostate carcinoma with PSA antibody (clone 3E6). HIER: boil tissue sections in pH 9 10mM Tris with 1mM EDTA for 20 min and allow to cool before testing.

## Description

Recognizes a single protein of 33-34kDa, identified as the prostate specific antigen (PSA). This MAb is highly specific to PSA and stains prostatic secretory and ductal epithelium in both normal and neoplastic tissues. PSA is a chymotrypsin-like serine protease (kallikrein family) exclusively produced by the prostate epithelium, and abundant in seminal fluid. PSA can be detected in the sera of patients with prostatic carcinoma. It is predominantly complexed to a liver-derived serine protease inhibitor, alpha-1-antichymotrypsin (ACT). A higher proportion of serum PSA is complexed to ACT in prostate cancer than in benign prostate hyperplasia. This MAb makes an excellent pair with MAb A67-B/E3 for PSA tests.

## Application Notes

Optimal dilution of the PSA antibody should be determined by the researcher.

## Immunogen

Human Prostate Specific Antigen was used as the immunogen for the PSA antibody.

## Storage

Store the PSA antibody at 2-8oC (with azide) or aliquot and store at -20oC or colder (without azide).