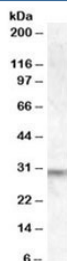


PRUNE2 Antibody (R34749)

Catalog No.	Formulation	Size
R34749-100UG	0.5 mg/ml in 1X TBS, pH7.3, with 0.5% BSA (US sourced) and 0.02% sodium azide	100 ug

[Bulk quote request](#)

Availability	1-3 business days
Species Reactivity	Human
Predicted Reactivity	Dog
Format	Antigen affinity purified
Host	Goat
Clonality	Polyclonal (goat origin)
Isotype	Goat Ig
Purity	Antigen affinity
Gene ID	158471
Applications	Western Blot : 1-3ug/ml ELISA (peptide) LOD : 1:32000
Limitations	This PRUNE2 antibody is available for research use only.



Western blot testing of human brain lysate with PRUNE2 antibody at 1ug/ml.
Predicted/observed molecular weight: ~30kDa.

Description

Additional name(s) for this target protein: BCH motif-containing molecule at the carboxyl terminal region 1, BMCC1, BNIPXL

Application Notes

Optimal dilution of the PRUNE2 antibody should be determined by the researcher.

Immunogen

Amino acids MESEKISEKQEE were used as the immunogen for this PRUNE2 antibody.

Storage

Aliquot and store the PRUNE2 antibody at -20oC.