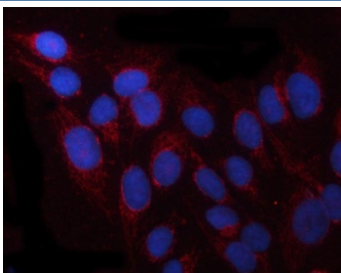


## PRUNE Antibody / Exopolyphosphatase PRUNE1 (RQ8229)

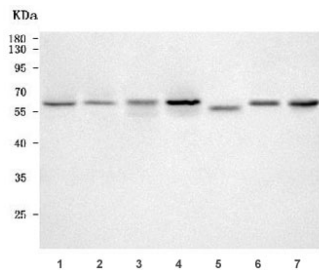
Catalog No.	Formulation	Size
RQ8229	0.5mg/ml if reconstituted with 0.2ml sterile DI water	100 ug

### Bulk quote request

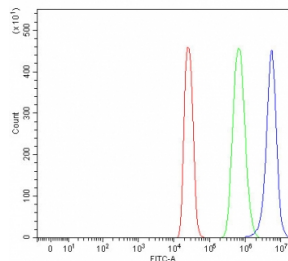
<b>Availability</b>	1-3 business days
<b>Species Reactivity</b>	Human, Mouse, Rat
<b>Format</b>	Antigen affinity purified
<b>Host</b>	Rabbit
<b>Clonality</b>	Polyclonal (rabbit origin)
<b>Isotype</b>	Rabbit IgG
<b>Purity</b>	Antigen affinity purified
<b>Buffer</b>	Lyophilized from 1X PBS with 2% Trehalose
<b>UniProt</b>	Q86TP1
<b>Localization</b>	Nuclear, cytoplasmic
<b>Applications</b>	Western Blot : 0.5-1ug/ml Immunofluorescence : 5ug/ml Flow Cytometry : 1-3ug/million cells Direct ELISA : 0.1-0.5ug/ml
<b>Limitations</b>	This PRUNE antibody is available for research use only.



Immunofluorescent staining of FFPE human U-2 OS cells with PRUNE antibody (red) and DAPI nuclear stain (blue). HIER: steam section in pH6 citrate buffer for 20 min.



Western blot testing of 1) human 293T, 2) human Jurkat, 3) human HEL, 4) human MCF7, 5) rat brain, 6) mouse brain and 7) mouse RAW264.7 cell lysate with PRUNE antibody. Predicted molecular weight ~50 kDa (multiple isoforms) but commonly observed at 50-60 kDa.



Flow cytometry testing of fixed and permeabilized human 293T cells with PRUNE antibody at 1ug/million cells (blocked with goat sera); Red=cells alone, Green=isotype control, Blue= PRUNE antibody.

## Description

This gene encodes a member of the DHH protein superfamily of phosphoesterases. This protein has been found to function as both a nucleotide phosphodiesterase and an exopolyphosphatase. This protein is believed to stimulate cancer progression and metastases through the induction of cell motility. A pseudogene has been identified on chromosome 13. Alternative splicing results in multiple transcript variants.

## Application Notes

Optimal dilution of the PRUNE antibody should be determined by the researcher.

## Immunogen

E. coli-derived recombinant human protein (amino acids M1-Q444) was used as the immunogen for the PRUNE antibody.

## Storage

After reconstitution, the PRUNE antibody can be stored for up to one month at 4oC. For long-term, aliquot and store at -20oC. Avoid repeated freezing and thawing.