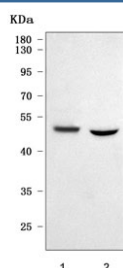


## PRSS35 Antibody / Inactive serine protease 35 (RQ7976)

Catalog No.	Formulation	Size
RQ7976	0.5mg/ml if reconstituted with 0.2ml sterile DI water	100 ug

**Bulk quote request**

<b>Availability</b>	1-3 business days
<b>Species Reactivity</b>	Human, Rat
<b>Format</b>	Antigen affinity purified
<b>Clonality</b>	Polyclonal (rabbit origin)
<b>Isotype</b>	Rabbit IgG
<b>Purity</b>	Antigen affinity purified
<b>Buffer</b>	Lyophilized from 1X PBS with 2% Trehalose
<b>UniProt</b>	Q8N3Z0
<b>Applications</b>	Western Blot : 0.5-1ug/ml Direct ELISA : 0.1-0.5ug/ml
<b>Limitations</b>	This PRSS35 antibody is available for research use only.



Western blot testing of 1) human PC-3 and 2) rat C6 cell lysate with PRSS35 antibody.  
Predicted molecular weight ~47 kDa.

## Description

Proteolytic degradation of extracellular matrix components has been suggested to play an essential role for the occurrence of ovulation. The plasminogen activator and matrix metalloproteinase systems, which were previously believed to be crucial for ovulation, are not required in this process. PRSS35, which was upregulated by gonadotropins. PRSS23 was highly expressed in atretic follicles and it was expressed in the ovarian stroma and theca tissues just prior to ovulation. PRSS35 was expressed in the theca layers of developing follicles. It was also highly induced in granulosa cells of preovulatory follicles. PRSS35 was also expressed in the forming and regressing CL. PRSS35 may be involved in ovulation and CL formation and regression, and that PRSS23 may play a role in follicular atresia.

## Application Notes

Optimal dilution of the PRSS35 antibody should be determined by the researcher.

## Immunogen

E. coli-derived recombinant human protein (amino acids H30-D340) was used as the immunogen for the PRSS35 antibody.

## Storage

After reconstitution, the PRSS35 antibody can be stored for up to one month at 4oC. For long-term, aliquot and store at -20oC. Avoid repeated freezing and thawing.