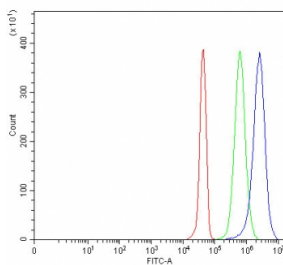


PRSS27 Antibody / Serine protease 27 / Marapsin (RQ7981)

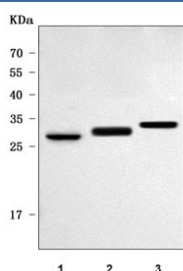
Catalog No.	Formulation	Size
RQ7981	0.5mg/ml if reconstituted with 0.2ml sterile DI water	100 ug

[Bulk quote request](#)

Availability	1-3 business days
Species Reactivity	Human, Mouse, Rat
Format	Antigen affinity purified
Host	Rabbit
Clonality	Polyclonal (rabbit origin)
Isotype	Rabbit IgG
Purity	Antigen affinity purified
Buffer	Lyophilized from 1X PBS with 2% Trehalose
UniProt	Q9BQR3
Applications	Western Blot : 0.5-1ug/ml Flow Cytometry : 1-3ug/million cells Direct ELISA : 0.1-0.5ug/ml
Limitations	This PRSS27 antibody is available for research use only.



Flow cytometry testing of human JK cells with PRSS27 antibody at 1ug/million cells (blocked with goat sera); Red=cells alone, Green=isotype control, Blue= PRSS27 antibody.



Western blot testing of 1) rat stomach, 2) mouse pancreas and 3) mouse MFC cell lysate with PRSS27 antibody. Predicted molecular weight ~32 kDa.

Description

This gene is located within a large protease gene cluster on chromosome 16. It belongs to the group-1 subfamily of serine proteases. The encoded protein is a secreted tryptic serine protease and is expressed mainly in the pancreas. Alternative splicing results in multiple transcript variants.

Application Notes

Optimal dilution of the PRSS27 antibody should be determined by the researcher.

Immunogen

E. coli-derived recombinant human protein (amino acids A23-K290) was used as the immunogen for the PRSS27 antibody.

Storage

After reconstitution, the PRSS27 antibody can be stored for up to one month at 4oC. For long-term, aliquot and store at -20oC. Avoid repeated freezing and thawing.