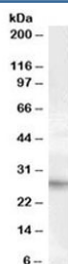


PRRX1 Antibody (R34131)

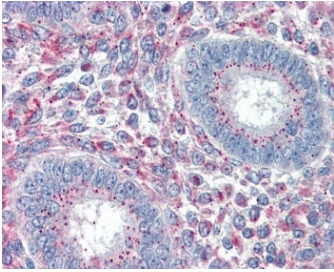
Catalog No.	Formulation	Size
R34131-100UG	0.5 mg/ml in 1X TBS, pH7.3, with 0.5% BSA (US sourced) and 0.02% sodium azide	100 ug

[Bulk quote request](#)

Availability	1-3 business days
Species Reactivity	Human
Predicted Reactivity	Mouse
Format	Antigen affinity purified
Host	Goat
Clonality	Polyclonal (goat origin)
Isotype	Goat Ig
Purity	Antigen affinity
Gene ID	5396
Localization	Nuclear, cytoplasmic
Applications	Western Blot : 1-3ug/ml IHC (FFPE) : 5ug/ml ELISA (peptide) LOD : 1:4000
Limitations	This PRRX1 antibody is available for research use only.



Western blot testing of human heart lysate with PRRX1 antibody at 1ug/ml.
Predicted/observed molecular weight: ~27 kDa.



IHC testing of FFPE human uterus tissue with PRRX1 antibody at 5ug/ml. Required HIER: steamed antigen retrieval with pH6 citrate buffer; AP-staining.

Description

Additional name(s) for this target protein: Paired related homeobox 1

Application Notes

Optimal dilution of the PRRX1 antibody should be determined by the researcher.

Immunogen

Amino acids GSDTPQQDNDQ were used as the immunogen for this PRRX1 antibody.

Storage

Aliquot and store the PRRX1 antibody at -20oC.