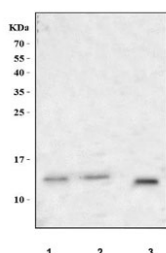


## PRR9 Antibody / Proline-rich protein 9 (RQ8440)

Catalog No.	Formulation	Size
RQ8440	0.5mg/ml if reconstituted with 0.2ml sterile DI water	100 ug

**Bulk quote request**

<b>Availability</b>	1-3 business days
<b>Species Reactivity</b>	Human, Mouse
<b>Format</b>	Antigen affinity purified
<b>Clonality</b>	Polyclonal (rabbit origin)
<b>Isotype</b>	Rabbit IgG
<b>Purity</b>	Antigen affinity purified
<b>Buffer</b>	Lyophilized from 1X PBS with 2% Trehalose
<b>UniProt</b>	Q5T870
<b>Applications</b>	Western Blot : 0.5-1ug/ml
<b>Limitations</b>	This PRR9 antibody is available for research use only.



Western blot testing of 1) human Caco-2, 2) human K562 and 3) mouse NIH 3T3 cell lysate with PRR9 antibody. Predicted molecular weight ~13 kDa.

### Description

Proline rich 9 is a protein that in humans is encoded by the PRR9 gene. PRR9 is pseudo-response regulator. It involved in clock function. PRR7 and PRR9 are partially redundant essential components of a temperature-sensitive circadian system.

### Application Notes

Optimal dilution of the PRR9 antibody should be determined by the researcher.

### Immunogen

Amino acids CQHPCQDKCLVQAQEVCLSQCQE were used as the immunogen for the PRR9 antibody.

## **Storage**

After reconstitution, the PRR9 antibody can be stored for up to one month at 4oC. For long-term, aliquot and store at -20oC. Avoid repeated freezing and thawing.