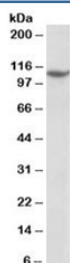


## PRPF6 Antibody / Pre-mRNA processing factor 6 (R36175)

Catalog No.	Formulation	Size
R36175-100UG	0.5 mg/ml in 1X TBS, pH7.3, with 0.5% BSA (US sourced) and 0.02% sodium azide	100 ug

[Bulk quote request](#)

Availability	1-3 business days
Species Reactivity	Human
Predicted Reactivity	Mouse, Rat, Dog, Cow
Format	Antigen affinity purified
Host	Goat
Clonality	Polyclonal (goat origin)
Isotype	Goat Ig
Purity	Antigen affinity
Gene ID	24148
Applications	Western Blot : 1-3ug/ml ELISA (peptide) LOD : 1:16000
Limitations	This PRPF6 antibody is available for research use only.



Western blot testing of Jurkat nuclear lysate with PRPF6 antibody at 1ug/ml. Predicted molecular weight: ~107kDa.

### Description

Additional name(s) for this target protein: PRP6; pre-mRNA processing factor 6

### Application Notes

Optimal dilution of the PRPF6 antibody should be determined by the researcher.

## **Immunogen**

Amino acids TGENHTSVDPRQTQ were used as the immunogen for this PRPF6 antibody.

## **Storage**

Aliquot and store the PRPF6 antibody at -20oC.