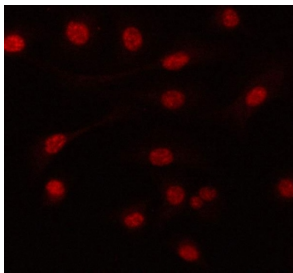


## PRPF6 Antibody / Pre-mRNA processing factor 6 (RQ7995)

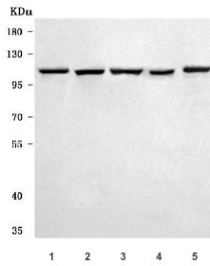
Catalog No.	Formulation	Size
RQ7995	0.5mg/ml if reconstituted with 0.2ml sterile DI water	100 ug

### Bulk quote request

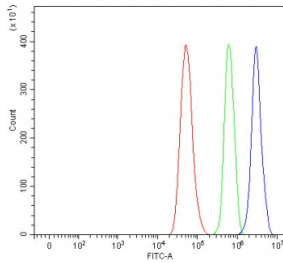
<b>Availability</b>	1-3 business days
<b>Species Reactivity</b>	Human, Mouse, Rat
<b>Format</b>	Antigen affinity purified
<b>Host</b>	Rabbit
<b>Clonality</b>	Polyclonal (rabbit origin)
<b>Isotype</b>	Rabbit IgG
<b>Purity</b>	Antigen affinity purified
<b>Buffer</b>	Lyophilized from 1X PBS with 2% Trehalose
<b>UniProt</b>	O94906
<b>Localization</b>	Nuclear, cytoplasmic
<b>Applications</b>	Western Blot : 0.5-1ug/ml Immunofluorescence : 5ug/ml Flow Cytometry : 1-3ug/million cells Direct ELISA : 0.1-0.5ug/ml
<b>Limitations</b>	This PRPF6 antibody is available for research use only.



Immunofluorescent staining of FFPE human A549 cells with PRPF6 antibody. HIER: steam section in pH6 citrate buffer for 20 min.



Western blot testing of 1) human HeLa, 2) human K562, 3) human 293T, 4) rat C6 and 5) mouse NIH 3T3 cell lysate with PRPF6 antibody. Predicted molecular weight ~107 kDa.



Flow cytometry testing of fixed and permeabilized human HeLa cells with PRPF6 antibody at 1ug/million cells (blocked with goat sera); Red=cells alone, Green=isotype control, Blue= PRPF6 antibody.

## Description

Pre-mRNA-processing factor 6 is a protein that in humans is encoded by the PRPF6 gene. The protein encoded by this gene appears to be involved in pre-mRNA splicing, possibly acting as a bridging factor between U5 and U4/U6 snRNPs in formation of the spliceosome. The encoded protein also can bind androgen receptor, providing a link between transcriptional activation and splicing.

## Application Notes

Optimal dilution of the PRPF6 antibody should be determined by the researcher.

## Immunogen

E. coli-derived recombinant human protein (amino acids K61-K585) was used as the immunogen for the PRPF6 antibody.

## Storage

After reconstitution, the PRPF6 antibody can be stored for up to one month at 4oC. For long-term, aliquot and store at -20oC. Avoid repeated freezing and thawing.