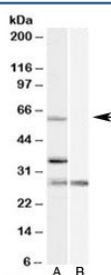


PRPF31 Antibody / PRP31 (R34406)

Catalog No.	Formulation	Size
R34406-100UG	0.5 mg/ml in 1X TBS, pH7.3, with 0.5% BSA (US sourced) and 0.02% sodium azide	100 ug

[Bulk quote request](#)

Availability	1-3 business days
Species Reactivity	Human
Predicted Reactivity	Mouse, Rat, Dog, Pig, Cow
Format	Antigen affinity purified
Clonality	Polyclonal (goat origin)
Isotype	Goat Ig
Purity	Antigen affinity
Gene ID	26121
Applications	Western Blot : 1-3ug/ml ELISA (peptide) LOD : 1:128000
Limitations	This PRPF31 antibody is available for research use only.



Western blot testing of HeLa cell lysate with PRPF31 antibody at 1ug/ml with [B] and without [A] blocking/immunizing peptide. Predicted molecular weight: ~55kDa.

Description

Additional name(s) for this target protein: Pre-mRNA processing factor 31

Application Notes

Optimal dilution of the PRPF31 antibody should be determined by the researcher.

Immunogen

Amino acids KELGNSLDKCKNNEN were used as the immunogen for this PRPF31 antibody.

Storage

Aliquot and store the PRPF31 antibody at -20oC.