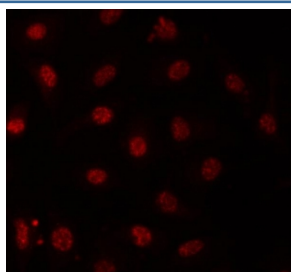


PRP31 Antibody / PRPF31 (RQ8092)

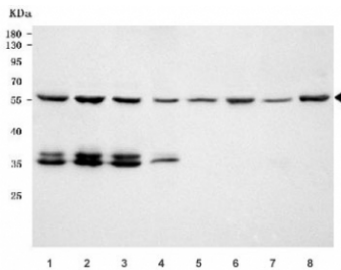
Catalog No.	Formulation	Size
RQ8092	0.5mg/ml if reconstituted with 0.2ml sterile DI water	100 ug

Bulk quote request

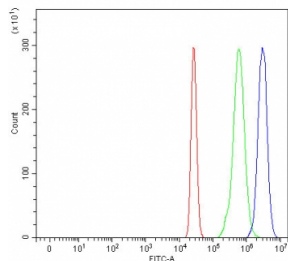
Availability	1-3 business days
Species Reactivity	Human, Mouse, Rat
Format	Antigen affinity purified
Clonality	Polyclonal (rabbit origin)
Isotype	Rabbit IgG
Purity	Antigen affinity purified
Buffer	Lyophilized from 1X PBS with 2% Trehalose
UniProt	Q8WWY3
Localization	Nuclear
Applications	Western Blot : 0.5-1ug/ml Immunofluorescence : 5ug/ml Flow Cytometry : 1-3ug/million cells Direct ELISA : 0.1-0.5ug/ml
Limitations	This PRP31 antibody is available for research use only.



Immunofluorescent staining of FFPE human A549 cells with PRP31 antibody (red).
HIER: steam section in pH6 citrate buffer for 20 min.



Western blot testing of 1) human HeLa, 2) human 293T, 3) human A549, 4) human Caco-2, 5) rat brain, 6) rat C6, 7) mouse brain and 8) mouse NIH 3T3 cell lysate with PRP31 antibody. Predicted molecular weight ~55 kDa.



Flow cytometry testing of fixed and permeabilized human U937 cells with PRP31 antibody at 1ug/million cells (blocked with goat sera); Red=cells alone, Green=isotype control, Blue= PRP31 antibody.

Description

PRP31 pre-mRNA processing factor 31 homolog (*S. cerevisiae*), also known as PRPF31, is a protein which in humans is encoded by the PRPF31 gene. This gene encodes a component of the spliceosome complex and is one of several retinitis pigmentosa-causing genes. When the gene product is added to the spliceosome complex, activation occurs.

Application Notes

Optimal dilution of the PRP31 antibody should be determined by the researcher.

Immunogen

E. coli-derived recombinant human protein (amino acids K73-K488) was used as the immunogen for the PRP31 antibody.

Storage

After reconstitution, the PRP31 antibody can be stored for up to one month at 4°C. For long-term, aliquot and store at -20°C. Avoid repeated freezing and thawing.