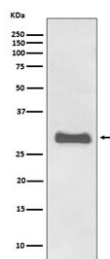


PrP Antibody / Prion Protein [clone EHH-16] (RQ5040)

Catalog No.	Formulation	Size
RQ5040	Antibody in PBS with 0.02% sodium azide, 50% glycerol and 0.4-0.5mg/ml BSA	100 ul

[Bulk quote request](#)

Availability	1-2 weeks
Species Reactivity	Human
Format	Purified
Clonality	Rabbit Monoclonal
Isotype	Rabbit IgG
Clone Name	EHH-16
Purity	Affinity purified
UniProt	P04156
Applications	Western Blot : 1:1000-1:2000
Limitations	This PrP antibody is available for research use only.



Western blot testing of human fetal brain lysate with PrP antibody. Expected molecular weight: 20-29 kDa.

Description

The protein encoded by this gene is a membrane glycosylphosphatidylinositol-anchored glycoprotein that tends to aggregate into rod-like structures. [RefSeq]

Application Notes

Optimal dilution of the PrP antibody should be determined by the researcher.

Immunogen

A synthetic peptide specific to human Prion Protein / PRNP was used as the immunogen for the PrP antibody.

Storage

Store the PrP antibody at -20oC.