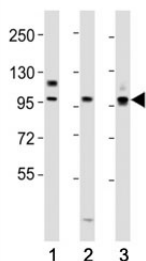


PROX1 Antibody / Prospero homeobox 1 (F47897)

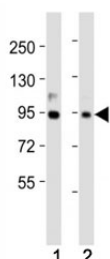
Catalog No.	Formulation	Size
F47897-0.4ML	In 1X PBS, pH 7.4, with 0.09% sodium azide	0.4 ml
F47897-0.08ML	In 1X PBS, pH 7.4, with 0.09% sodium azide	0.08 ml

[Bulk quote request](#)

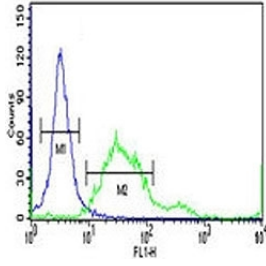
Availability	1-3 business days
Species Reactivity	Human, Mouse
Format	Antigen affinity purified
Host	Rabbit
Clonality	Polyclonal (rabbit origin)
Isotype	Rabbit Ig
Purity	Antigen affinity
UniProt	Q92786
Applications	Western Blot : 1:1000 IHC (Paraffin) : 1:50-1:100 Flow Cytometry : 1:10-1:50
Limitations	This PROX1 antibody is available for research use only.



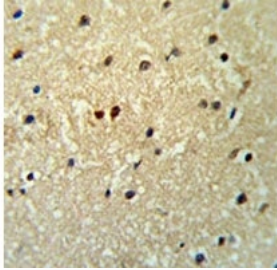
Western blot testing of PROX1 antibody at 1:2000 dilution. Lane 1: HepG2 lysate; 2: mouse liver lysate; 3: SH-SY5Y lysate; Predicted molecular weight is 83 kDa, observed at 80-110 kDa.



Western blot testing of PROX1 antibody at 1:2000 dilution. Lane 1: SW620 lysate; 2: SH-SY5Y lysate



PROX1 antibody flow cytometric analysis of 293 cells (right histogram) compared to a negative control (left histogram). FITC-conjugated goat-anti-rabbit secondary Ab was used for the analysis.



PROX1 antibody IHC analysis in formalin fixed and paraffin embedded human brain tissue.

Description

Prospero homeobox protein 1 is a transcription factor involved in developmental processes such as cell fate determination, gene transcriptional regulation and progenitor cell regulation in a number of organs. Plays a critical role in embryonic development and functions as a key regulatory protein in neurogenesis and the development of the heart, eye lens, liver, pancreas and the lymphatic system. Involved in the regulation of the circadian rhythm. Represses: transcription of the retinoid-related orphan receptor ROR γ , transcriptional activator activity of RORA and ROR γ and the expression of RORA/ROR γ -target genes including core clock components: ARNTL/BMAL1, NPAS2 and CRY1 and metabolic genes: AVPR1A and ELOVL3. [UniProt]

Application Notes

Titration of the PROX1 antibody may be required due to differences in protocols and secondary/substrate sensitivity.

Immunogen

A portion of amino acids 492-520 from the human protein was used as the immunogen for this PROX1 antibody.

Storage

Aliquot the PROX1 antibody and store frozen at -20oC or colder. Avoid repeated freeze-thaw cycles.