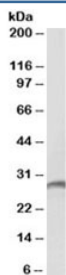


## Proteinase 3 Antibody / PRTN3 (R34244)

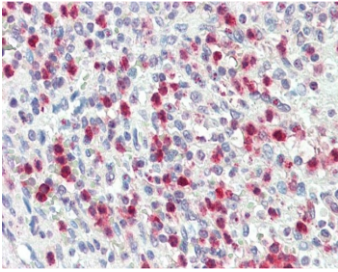
Catalog No.	Formulation	Size
R34244-100UG	0.5 mg/ml in 1X TBS, pH7.3, with 0.5% BSA (US sourced) and 0.02% sodium azide	100 ug

[Bulk quote request](#)

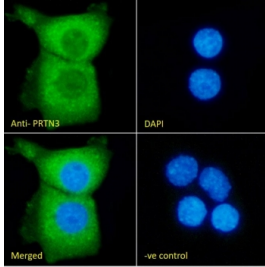
<b>Availability</b>	1-3 business days
<b>Species Reactivity</b>	Human
<b>Format</b>	Antigen affinity purified
<b>Host</b>	Goat
<b>Clonality</b>	Polyclonal (goat origin)
<b>Isotype</b>	Goat Ig
<b>Purity</b>	Antigen affinity
<b>Gene ID</b>	5657
<b>Localization</b>	Cell membrane, secreted, cytoplasm
<b>Applications</b>	Western Blot : 1-3ug/ml Immunohistochemistry (FFPE) : 5ug/ml Immunofluorescence : 10ug/ml Flow Cytometry : 10ug/ml ELISA (peptide) LOD : 1:1000
<b>Limitations</b>	This Proteinase 3 antibody is available for research use only.



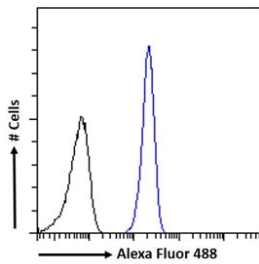
Western blot testing of human spleen lysate with Proteinase 3 antibody at 2ug/ml.  
Predicted molecular weight ~28 kDa.



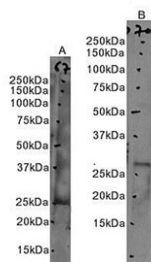
IHC testing of FFPE human spleen tissue with Proteinase 3 antibody at 5ug/ml. Required HIER: steamed antigen retrieval with pH6 citrate buffer; AP-staining.



Immunofluorescent staining of fixed and permeabilized human A431 cells with Proteinase 3 antibody (green) at 10ug/ml and DAPI nuclear stain (blue).



FACS testing of fixed and permeabilized human A431 cells with Proteinase 3 antibody (blue) at 10ug/ml and naive goat Ig (black).



Western blot testing of human A) bone marrow and B) spleen tissue lysate with Proteinase 3 antibody. Predicted molecular weight ~28 kDa.

## Description

Additional name(s) for this target protein: Myeloblastin, ACPA, AGP7; PRTN3

## Application Notes

Optimal dilution of the Proteinase 3 antibody should be determined by the researcher.

## Immunogen

Amino acids HNVRTQEPTQQ were used as the immunogen for this Proteinase 3 antibody.

## Storage

Aliquot and store the Proteinase 3 antibody at -20oC.

