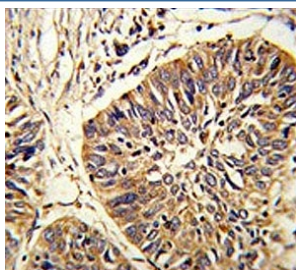


## Protein disulfide-isomerase A3 Antibody / PDIA3 / ERp57 (F54794)

Catalog No.	Formulation	Size
F54794-0.4ML	In 1X PBS, pH 7.4, with 0.09% sodium azide	0.4 ml
F54794-0.08ML	In 1X PBS, pH 7.4, with 0.09% sodium azide	0.08 ml

**Bulk quote request**

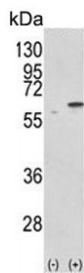
<b>Availability</b>	1-3 business days
<b>Species Reactivity</b>	Human
<b>Format</b>	Purified
<b>Clonality</b>	Polyclonal (rabbit origin)
<b>Isotype</b>	Rabbit Ig
<b>Purity</b>	Purified
<b>UniProt</b>	P30101
<b>Localization</b>	Cytoplasmic
<b>Applications</b>	Flow Cytometry : 1:10-1:50 (1x10 <sup>6</sup> cells) Immunohistochemistry (FFPE) : 1:50-1:100 Western Blot : 1:500-1:1000
<b>Limitations</b>	This Protein disulfide-isomerase A3 antibody is available for research use only.



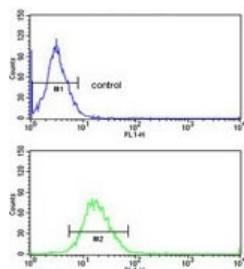
IHC testing of FFPE human lung carcinoma tissue with Protein disulfide-isomerase A3 antibody. HIER: steam section in pH6 citrate buffer for 20 min and allow to cool prior to staining.

kDa  
130  
72  
55  
36  
28  
17

Western blot testing of human A2058 cell lysate with Protein disulfide-isomerase A3 antibody. Predicted molecular weight ~57 kDa.



Western blot testing of 1) non-transfected and 2) transfected 293 cell lysate with Protein disulfide-isomerase A3 antibody.



Flow cytometry testing of human NCI-H292 cells with Protein disulfide-isomerase A3 antibody; Blue=isotype control, Green= Protein disulfide-isomerase A3 antibody.

## Description

PDIA3 is the endoplasmic reticulum that interacts with lectin chaperones calreticulin and calnexin to modulate folding of newly synthesized glycoproteins. The protein was once thought to be a phospholipase; however, it has been demonstrated that the protein actually has protein disulfide isomerase activity. It is thought that complexes of lectins and this protein mediate protein folding by promoting formation of disulfide bonds in their glycoprotein substrates.

## Application Notes

The stated application concentrations are suggested starting points. Titration of the Protein disulfide-isomerase A3 antibody may be required due to differences in protocols and secondary/substrate sensitivity.

## Immunogen

A portion of amino acids 446-475 from the human protein was used as the immunogen for the Protein disulfide-isomerase A3 antibody.

## Storage

Aliquot the Protein disulfide-isomerase A3 antibody and store frozen at -20oC or colder. Avoid repeated freeze-thaw cycles.