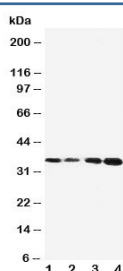


Protein C Antibody / PROC (R30767)

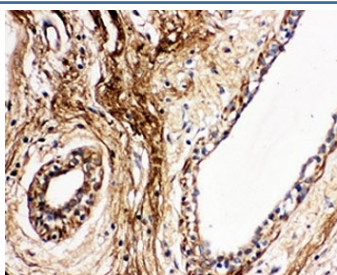
Catalog No.	Formulation	Size
R30767	0.5mg/ml if reconstituted with 0.2ml sterile DI water	100 ug

Bulk quote request

Availability	1-3 business days
Species Reactivity	Human
Format	Antigen affinity purified
Host	Rabbit
Clonality	Polyclonal (rabbit origin)
Isotype	Rabbit IgG
Purity	Antigen affinity
Buffer	Lyophilized from 1X PBS with 2.5% BSA and 0.025% sodium azide/thimerosal
UniProt	P04070
Applications	Western Blot : 0.5-1ug/ml IHC (FFPE) : 0.5-1ug/ml
Limitations	This Protein C antibody is available for research use only.



Western blot testing of Protein C antibody and Lane 1: Jurkat; 2: CEM; 3: SMMC-7721; 4: HeLa cell lysate. Observed size: 35KD, predicted size: 52KD



IHC-P: Protein C antibody testing of human breast cancer tissue

Description

Protein C (PROC), also called PC, is a zymogenic (inactive) protein, the activated form of which plays an important role in regulating blood clotting, inflammation, cell death and maintaining the permeability of blood vessel walls in humans and other animals. The PROC gene is mapped on 2q14.3. The PROC gene contains 8 exons and spans about 11 kb by Foster et al. The conversion of Protein C to a protease with anticoagulant function by thrombin requires as a cofactor thrombomodulin, an endothelial cell membrane protein. Riewald et al. demonstrated that activated Protein C uses the endothelial cell protein C receptor as a coreceptor for cleavage of protease-activated receptor-1 on endothelial cells. Faust et al. demonstrated that the endothelial pathways required for Protein C activation are impaired in severe meningococcal sepsis. They stated that improvement in the outcome of children with meningococcal sepsis who were treated with unactivated Protein C concentrates had been described in case reports and in one uncontrolled series.

Application Notes

The stated application concentrations are suggested starting amounts. Titration of the Protein C antibody may be required due to differences in protocols and secondary/substrate sensitivity.

Immunogen

Amino acids 446-461 (HGHIRDKEAPQKSWAP) were used as the immunogen for this Protein C antibody.

Storage

After reconstitution, the Protein C antibody can be stored for up to one month at 4°C. For long-term, aliquot and store at -20°C. Avoid repeated freezing and thawing.