

Prostate Specific Antigen Antibody [clone 1A7 or 1A7G6B6] (V2627)

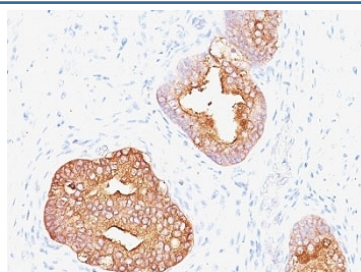
Catalog No.	Formulation	Size
V2627-100UG	0.2 mg/ml in 1X PBS with 0.1 mg/ml BSA (US sourced) and 0.05% sodium azide	100 ug
V2627-20UG	0.2 mg/ml in 1X PBS with 0.1 mg/ml BSA (US sourced) and 0.05% sodium azide	20 ug
V2627SAF-100UG	1 mg/ml in 1X PBS; BSA free, sodium azide free	100 ug
V2627IHC-7ML	Prediluted in 1X PBS with 0.1 mg/ml BSA (US sourced) and 0.05% sodium azide; *For IHC use only*	7 ml



Citations (2)

[Bulk quote request](#)

Availability	1-3 business days
Species Reactivity	Human
Format	Purified
Host	Mouse
Clonality	Monoclonal (mouse origin)
Isotype	Mouse IgG1, kappa
Clone Name	1A7 or 1A7G6B6
Purity	Protein G affinity chromatography
UniProt	P07288
Localization	Cytoplasmic
Applications	Flow Cytometry : 0.5-1ug/10 ⁶ cells Immunofluorescence : 0.5-1ug/ml Immunohistochemistry (FFPE) : 0.5-1ug/ml for 30 min at RT
Limitations	This Prostate Specific Antigen antibody is available for research use only.



IHC: Formalin-fixed, paraffin-embedded human prostate carcinoma stained with Prostate Specific Antigen antibody (1A7).

Description

Recognizes a single protein of 33-34kDa, identified as the prostate specific antigen (PSA). This mAb is highly specific to PSA and stains prostatic secretory and ductal epithelium in both normal and neoplastic tissues. PSA is a chymotrypsin-like serine protease (kallikrein family) exclusively produced by the prostate epithelium, and abundant in seminal fluid. PSA can be detected in the sera of patients with prostatic carcinoma. It is predominantly complexed to a liver-derived serine protease inhibitor, alpha-1-antichymotrypsin (ACT). A higher proportion of serum PSA is complexed to ACT in prostate cancer than in benign prostate hyperplasia. This mAb makes an excellent pair with mAb A67-B/E3 for PSA tests.

Application Notes

Optimal dilution of the Prostate Specific Antigen antibody should be determined by the researcher.

1. Staining of formalin-fixed tissues requires boiling tissue sections in 10mM Citrate buffer, pH 6.0, for 10-20 min followed by cooling at RT for 20 minutes
2. The prediluted format is supplied in a dropper bottle and is optimized for use in IHC. After epitope retrieval step (if required), drip mAb solution onto the tissue section and incubate at RT for 30 min.

Immunogen

PSA (p30) from human sperm plasma was used as the immunogen for the Prostate Specific Antigen antibody.

Storage

Store the Prostate Specific Antigen antibody at 2-8oC (with azide) or aliquot and store at -20oC or colder (without azide).