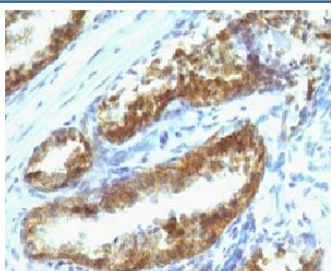


Prostate Specific Antibody [clone PSAK3-1] (V7014)

Catalog No.	Formulation	Size
V7014-100UG	0.2 mg/ml in 1X PBS with 0.1 mg/ml BSA (US sourced) and 0.05% sodium azide	100 ug
V7014-20UG	0.2 mg/ml in 1X PBS with 0.1 mg/ml BSA (US sourced) and 0.05% sodium azide	20 ug
V7014SAF-100UG	1 mg/ml in 1X PBS; BSA free, sodium azide free	100 ug
V7014IHC-7ML	Prediluted in 1X PBS with 0.1 mg/ml BSA (US sourced) and 0.05% sodium azide; *For IHC use only*	7 ml

[Bulk quote request](#)

Availability	1-3 business days
Species Reactivity	Human
Format	Purified
Host	Mouse
Clonality	Monoclonal (mouse origin)
Isotype	Mouse IgG1, kappa
Clone Name	PSAK3-1
Purity	Protein G affinity chromatography
UniProt	P07288
Localization	Cytoplasmic
Applications	Immunohistochemistry (FFPE) : 1-2ug/ml for 30 min at RT Prediluted IHC Only Format : incubate for 30 min at RT (1)
Limitations	This Prostate Specific antibody is available for research use only.



IHC testing of human prostate carcinoma with Prostate Specific antibody (clone PSAK3-1). Staining of formalin-fixed tissues requires boiling tissue sections in pH 9 10mM Tris with 1mM EDTA for 10-20 min followed by cooling at RT for 20 minutes.

Description

Kallikreins are a subgroup of serine proteases having diverse physiological functions. Growing evidence suggests that many kallikreins are implicated in carcinogenesis and some have potential as novel cancer and other disease biomarkers. Prostate specific antigen/KLK3 is one of the fifteen kallikrein subfamily members located in a cluster on chromosome 19. It is a protease present in seminal plasma. It is thought to function normally in the liquefaction of seminal coagulum, presumably by hydrolysis of the high molecular mass seminal vesicle protein. Serum level of this protein, called PSA in the clinical setting, is useful in the diagnosis and monitoring of prostatic carcinoma. [RefSeq]

Application Notes

Optimal dilution of the Prostate Specific antibody should be determined by the researcher.

1. The prediluted format is supplied in a dropper bottle and is optimized for use in IHC. After epitope retrieval step (if required), drip mAb solution onto the tissue section and incubate at RT for 30 min.

Immunogen

Recombinant full-length human PSA protein was used as the immunogen for the Prostate Specific antibody.

Storage

Store the Prostate Specific antibody at 2-8oC (with azide) or aliquot and store at -20oC or colder (without azide).