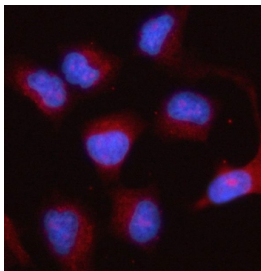


Prostaglandin E synthase 2 Antibody / PTGES2 (RQ6672)

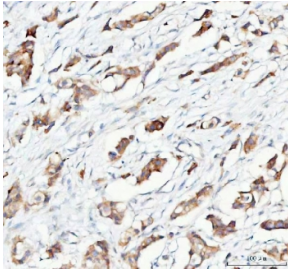
Catalog No.	Formulation	Size
RQ6672	0.5mg/ml if reconstituted with 0.2ml sterile DI water	100 ug

[Bulk quote request](#)

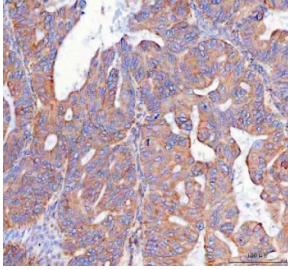
Availability	1-3 business days
Species Reactivity	Human, Mouse, Rat
Format	Antigen affinity purified
Host	Rabbit
Clonality	Polyclonal (rabbit origin)
Isotype	Rabbit IgG
Purity	Antigen affinity purified
Buffer	Lyophilized from 1X PBS with 2% Trehalose
UniProt	Q9H7Z7
Localization	Cytoplasmic
Applications	Western Blot : 1-2ug/ml Immunohistochemistry (FFPE) : 2-5ug/ml Immunofluorescence (FFPE) : 5ug/ml Flow Cytometry : 1-3ug/million cells Direct ELISA : 0.1-0.5ug/ml
Limitations	This Prostaglandin E synthase 2 antibody is available for research use only.



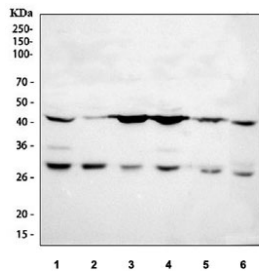
Immunofluorescent staining of FFPE human HeLa cells with Prostaglandin E synthase 2 antibody (red) and DAPI nuclear stain (blue). HIER: steam section in pH6 citrate buffer for 20 min.



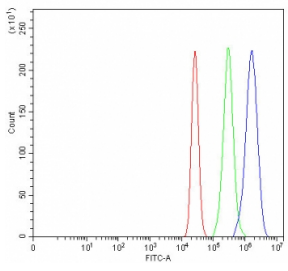
IHC staining of FFPE human breast cancer tissue with Prostaglandin E synthase 2 antibody. HIER: boil tissue sections in pH8 EDTA for 20 min and allow to cool before testing.



IHC staining of FFPE human ovarian cancer tissue with Prostaglandin E synthase 2 antibody. HIER: boil tissue sections in pH8 EDTA for 20 min and allow to cool before testing.



Western blot testing of 1) human HeLa, 2) human HaCaT, 3) human MCF7, 4) human A549, 5) rat brain and 6) mouse brain tissue lysate with Prostaglandin E synthase 2 antibody. Predicted molecular weight: ~42 kDa but can be visualized at 30-35 kDa.



Flow cytometry testing of fixed and permeabilized human MCF7 cells with Prostaglandin E synthase 2 antibody at 1ug/million cells (blocked with goat sera); Red=cells alone, Green=isotype control, Blue= Prostaglandin E synthase 2 antibody.

Description

Microsomal prostaglandin E synthase-2 (mPGES-2) or Prostaglandin E synthase 2 is an enzyme that in humans encoded by the PTGES2 gene located on chromosome 9. The protein encoded by this gene is a membrane-associated prostaglandin E synthase, which catalyzes the conversion of prostaglandin H2 to prostaglandin E2. This protein also has been shown to activate the transcription regulated by a gamma-interferon-activated transcription element (GATE). Multiple transcript variants have been found for this gene.

Application Notes

Optimal dilution of the Prostaglandin E synthase 2 antibody should be determined by the researcher.

Immunogen

Recombinant human protein (amino acids L100-I370) was used as the immunogen for the Prostaglandin E synthase 2 antibody.

Storage

After reconstitution, the Prostaglandin E synthase 2 antibody can be stored for up to one month at 4°C. For long-term,

aliquot and store at -20oC. Avoid repeated freezing and thawing.