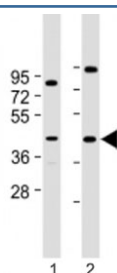


## Prostaglandin D2 Receptor Antibody / PTGDR (C-Terminal Region) (F54113)

Catalog No.	Formulation	Size
F54113-0.2ML	In 1X PBS, pH 7.4, with 0.09% sodium azide	0.2 ml
F54113-0.05ML	In 1X PBS, pH 7.4, with 0.09% sodium azide	0.05 ml

**Bulk quote request**

<b>Availability</b>	1-3 business days
<b>Species Reactivity</b>	Human
<b>Format</b>	Antigen affinity purified
<b>Clonality</b>	Polyclonal (rabbit origin)
<b>Isotype</b>	Rabbit Ig
<b>Purity</b>	Antigen affinity
<b>UniProt</b>	Q13258
<b>Applications</b>	Western Blot : 1:2000
<b>Limitations</b>	This Prostaglandin D2 Receptor antibody is available for research use only.



Western blot testing of Prostaglandin D2 Receptor antibody at 1:2000: Lane 1) human HepG2 and 2) Y79 cell lysate. Predicted molecular weight ~40 kDa.

### Description

Receptor for prostaglandin D2 (PGD2). The activity of this receptor is mainly mediated by G(s) proteins that stimulate adenylate cyclase, resulting in an elevation of intracellular cAMP. A mobilization of calcium is also observed, but without formation of inositol 1,4,5-trisphosphate (By similarity). [UniProt]

### Application Notes

The stated application concentrations are suggested starting points. Titration of the Prostaglandin D2 Receptor antibody may be required due to differences in protocols and secondary/substrate sensitivity.

## Immunogen

A portion of amino acids 306-348 from human PTGDR was used as the immunogen for the Prostaglandin D2 Receptor antibody.

## Storage

Aliquot the Prostaglandin D2 Receptorantibody and store frozen at -20oC or colder. Avoid repeated freeze-thaw cycles.