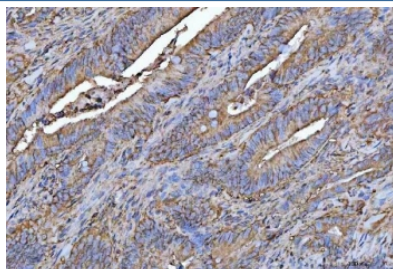


## PROSER3 Antibody / Proline and serine-rich protein 3 (RQ8451)

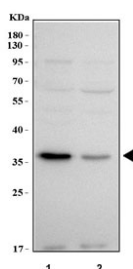
Catalog No.	Formulation	Size
RQ8451	0.5mg/ml if reconstituted with 0.2ml sterile DI water	100 ug

**Bulk quote request**

<b>Availability</b>	1-3 business days
<b>Species Reactivity</b>	Human
<b>Format</b>	Antigen affinity purified
<b>Clonality</b>	Polyclonal (rabbit origin)
<b>Isotype</b>	Rabbit IgG
<b>Purity</b>	Antigen affinity purified
<b>Buffer</b>	Lyophilized from 1X PBS with 2% Trehalose
<b>UniProt</b>	Q2NL68
<b>Localization</b>	Cytoplasm
<b>Applications</b>	Western Blot : 0.5-1ug/ml Immunohistochemistry (FFPE) : 2-5ug/ml Direct ELISA : 0.1-0.5ug/ml
<b>Limitations</b>	This PROSER3 antibody is available for research use only.



IHC staining of FFPE human colorectal adenocarcinoma tissue with PROSER3 antibody.  
HIER: boil tissue sections in pH8 EDTA for 20 min and allow to cool before testing.



Western blot testing of human 1) A549 and 2) RT4 cell lysate with PROSER3 antibody.  
Predicted molecular weight ~51/35/21 kDa (multiple isoforms).

## Description

The function of this protein remains unknown.

## Application Notes

Optimal dilution of the PROSER3 antibody should be determined by the researcher.

## Immunogen

An E.coli-derived human recombinant protein (D2-R426) was used as the immunogen for the PROSER3 antibody.

## Storage

After reconstitution, the PROSER3 antibody can be stored for up to one month at 4oC. For long-term, aliquot and store at -20oC. Avoid repeated freezing and thawing.