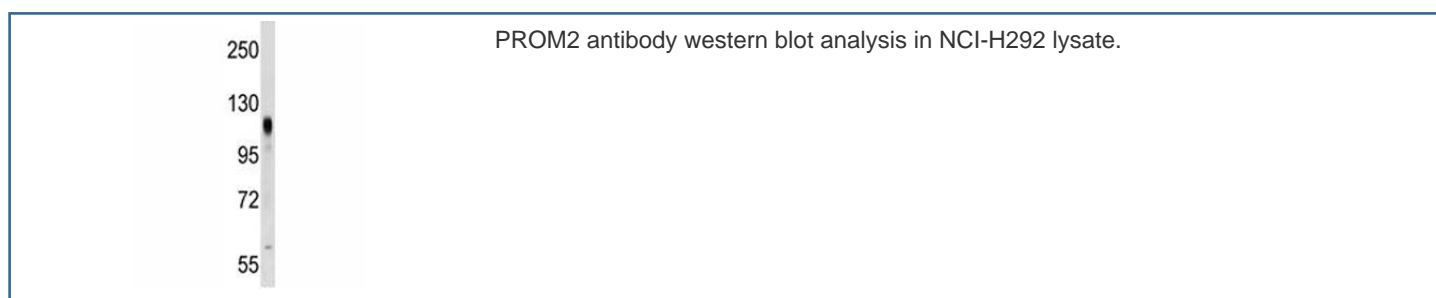


PROM2 Antibody (F45956)

| Catalog No. | Formulation | Size |
|---------------|--|---------|
| F45956-0.4ML | In 1X PBS, pH 7.4, with 0.09% sodium azide | 0.4 ml |
| F45956-0.08ML | In 1X PBS, pH 7.4, with 0.09% sodium azide | 0.08 ml |

[Bulk quote request](#)

| | |
|---------------------------|---|
| Availability | 1-3 business days |
| Species Reactivity | Human |
| Format | Antigen affinity purified |
| Clonality | Polyclonal (rabbit origin) |
| Isotype | Rabbit Ig |
| Purity | Antigen affinity |
| UniProt | Q8N271 |
| Applications | Western Blot : 1:1000 |
| Limitations | This PROM2 antibody is available for research use only. |



Description

This gene encodes a member of the prominin family of pentaspan membrane glycoproteins. The encoded protein localizes to basal epithelial cells and may be involved in the organization of plasma membrane microdomains. Alternative splicing results in multiple transcript variants.

Application Notes

Titration of the PROM2 antibody may be required due to differences in protocols and secondary/substrate sensitivity.

Immunogen

A portion of amino acids 440-466 from the human protein was used as the immunogen for this PROM2 antibody.

Storage

Aliquot the PROM2 antibody and store frozen at -20oC or colder. Avoid repeated freeze-thaw cycles.