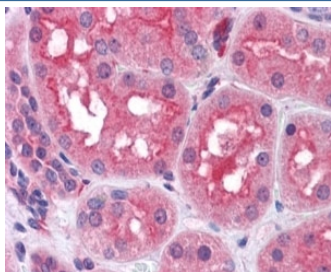


## Prolyl Endopeptidase Antibody (R35521)

Catalog No.	Formulation	Size
R35521-100UG	0.5 mg/ml in 1X TBS, pH7.3, with 0.5% BSA (US sourced) and 0.02% sodium azide	100 ug

[Bulk quote request](#)

Availability	1-3 business days
Species Reactivity	Human
Predicted Reactivity	Cow, Dog, Mouse, Pig, Rat
Format	Antigen affinity purified
Host	Goat
Clonality	Polyclonal (goat origin)
Isotype	Goat Ig
Purity	Antigen affinity
Gene ID	5550
Applications	Immunohistochemistry (FFPE) : 3-6ug/ml ELISA (peptide) LOD : 1:16000
Limitations	This Prolyl Endopeptidase antibody is available for research use only.



IHC testing of FFPE human kidney with Prolyl Endopeptidase antibody at 4ug/ml. HIER: steamed with pH6 citrate buffer, AP-staining.

### Description

Additional name(s) for this target protein: PREP

### Application Notes

Optimal dilution of the Prolyl Endopeptidase antibody should be determined by the researcher.

## **Immunogen**

Amino acids QYIVGRSRKQSNP were used as the immunogen for this Prolyl Endopeptidase antibody.

## **Storage**

Aliquot and store the Prolyl Endopeptidase antibody at -20oC.